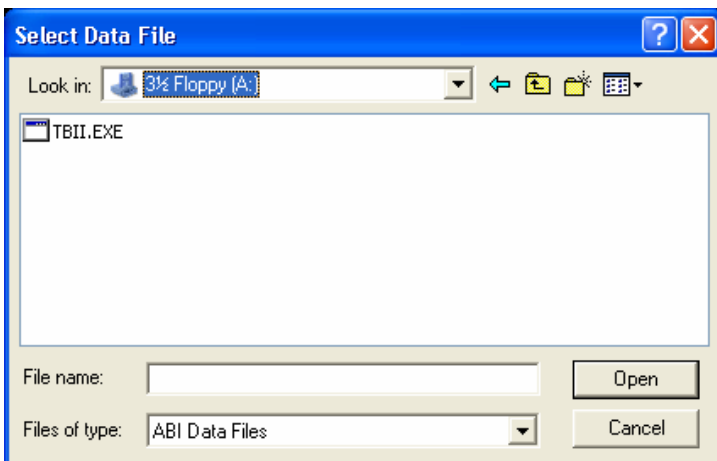


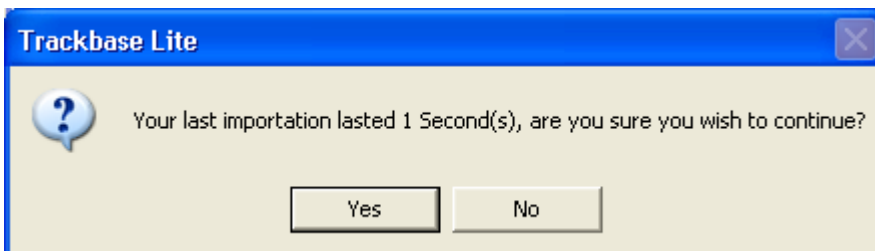
Importing your Data from Disk

If you receive your data from ABI on a 3½" floppy disk you need to place this disk into the disk drive before selecting the Import option from the main menu. When you click on the Import icon, Trackbase Lite will automatically search your a:\ drive for a data disk. The screen below will appear - you can see that Trackbase Lite is looking in the computers a:\ drive and has located one ABI data file on the disk, called **Tbii.exe**.

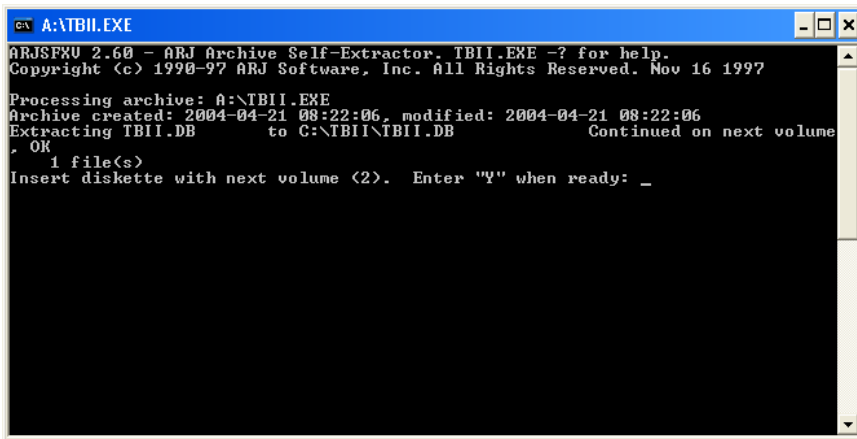


To start importing this data file simply click once on the **Tbii.exe** file to highlight it and then click on the **'Open'** button.

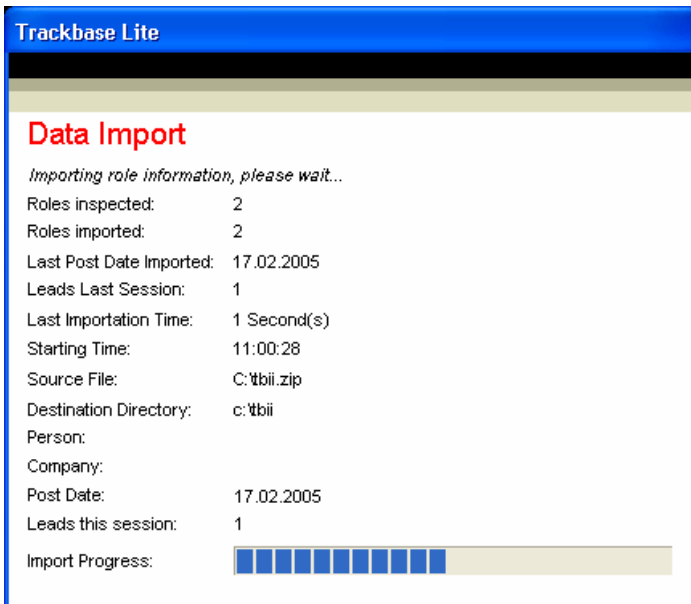
Once you have opened the file, Trackbase Lite will tell you the duration of the last import and will ask you if you still want to continue. Click on the **'Yes'** button to continue. Trackbase Lite will then start importing the contents of the file into the system.



If you have more than one disk you will see the screen below, prompting you to insert the second disk. Insert the second disk and type 'Y' to continue importing the data.



The import will begin. The indicator bar at the bottom of the window allows you to see the progress of the import.



Once the import has completed you will be returned to the front screen of Trackbase Lite.

Please note: Once you have started the import process, it is not advisable to try to cancel the operation in any way. Depending on the number of project details you receive and the speed of your computer the import can last from a few minutes to a few hours.