

Installing Trackbase Lite

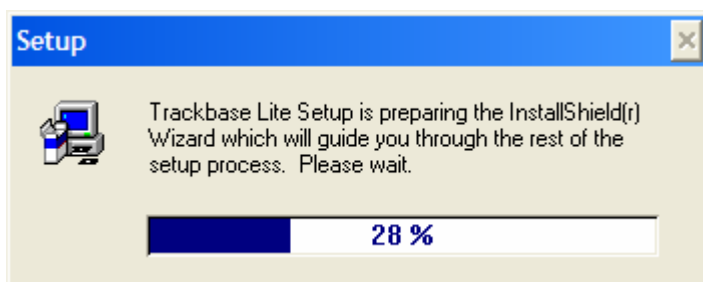
The Trackbase Lite installation file can be obtained by two methods.

1. Download the file from www.abibuildingdata.com/trackbase and save it to your desktop or local disk C. The download file is large, so this is only recommended if you have a broadband connection.
2. Request the file be sent to you on a CD-ROM from ABI Customer Support on 0151 353 3500.

If you have downloaded the file from our website, save it to your computer and then, once the download has completed, locate the file 'Setup.exe', and double-click on it to start the install process.

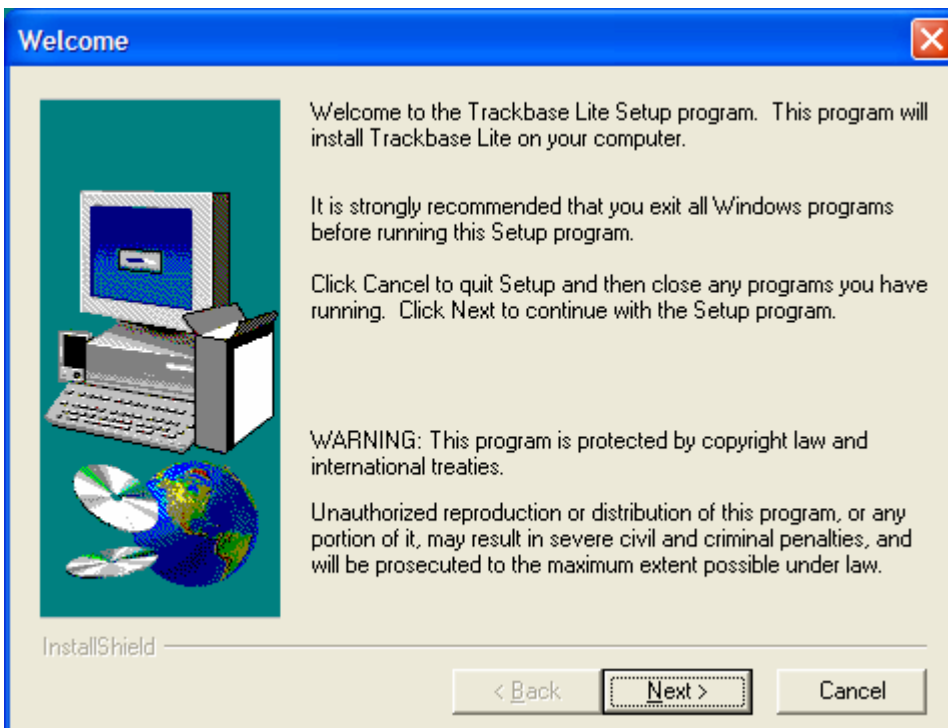
If you have received a CD-ROM, place the disk into your CD drive. It should automatically start the install process. If the CD does not auto-play, go to 'Start', 'Run' and then click on the 'browse' button. Select your CD drive from the drop down box and then double click on the file 'Setup.exe' that you see in the main box. This will start the install process.

Close all other open programs and then click on 'Yes' to continue.



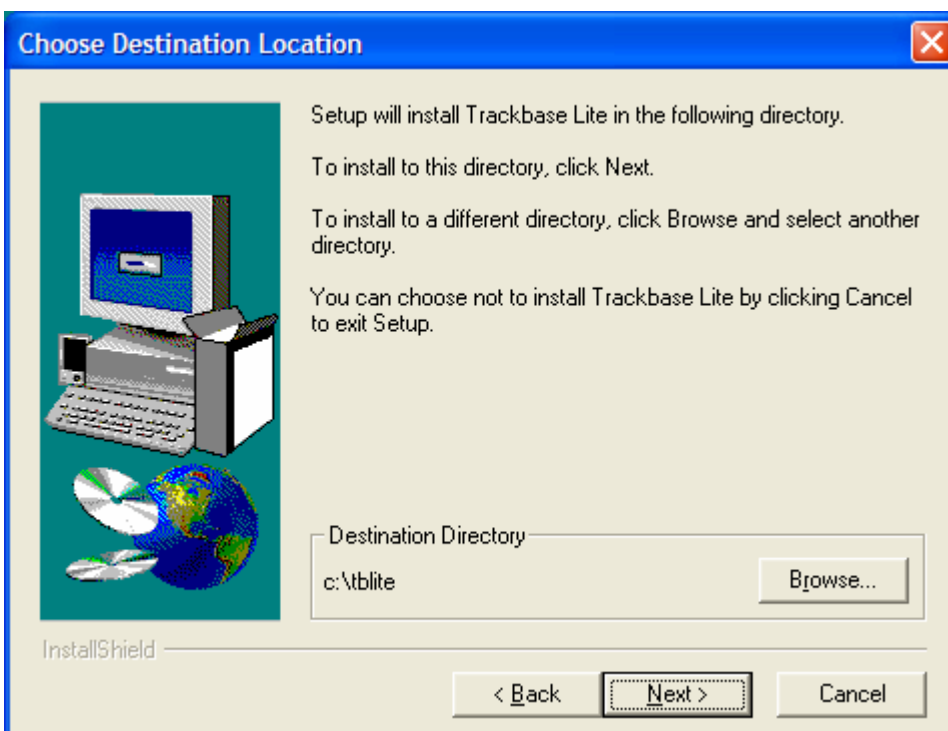
The Trackbase Lite installation will begin.

If you have closed all open programs and are ready to install Trackbase Lite onto your computer click on the 'Next' button to continue.

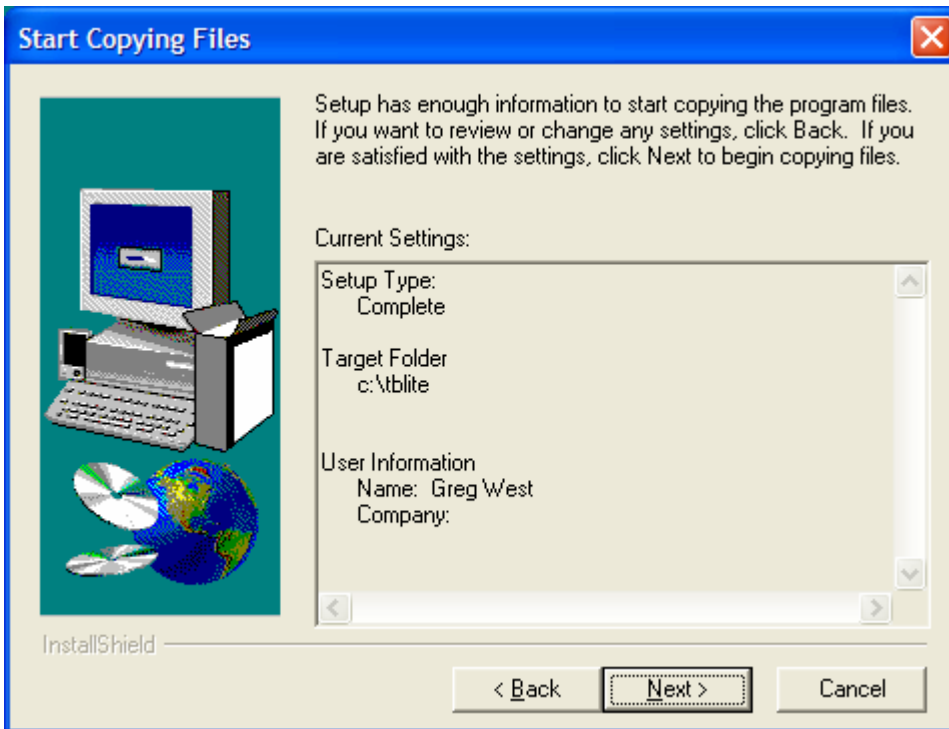


The next screen will tell you the location where Trackbase Lite will be installed. If you need to change this location click on the 'Browse' button and you can select another location. However, we do recommend leaving Trackbase Lite to install to its default locations if possible.

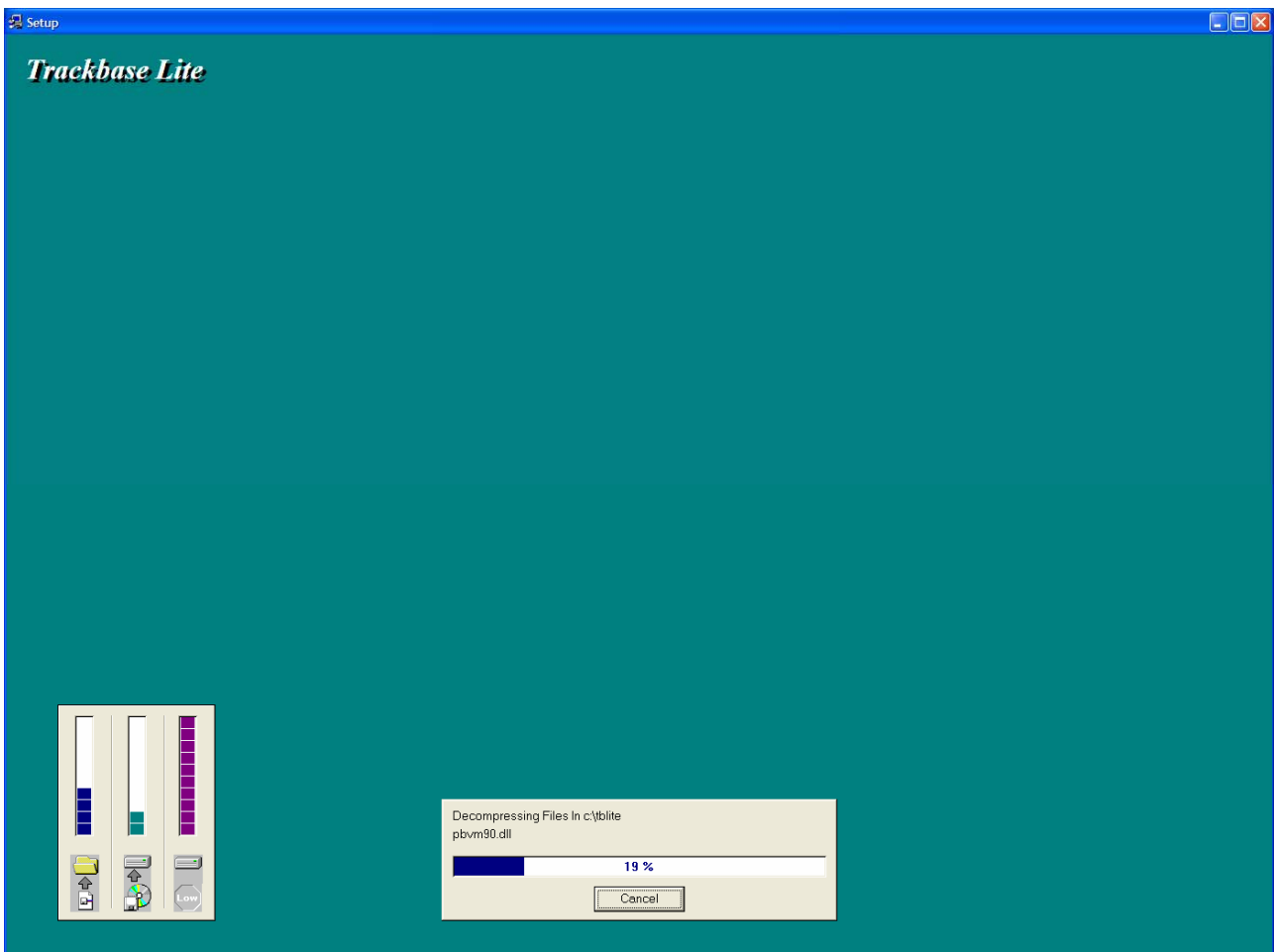
Click 'Next' to continue the installation.



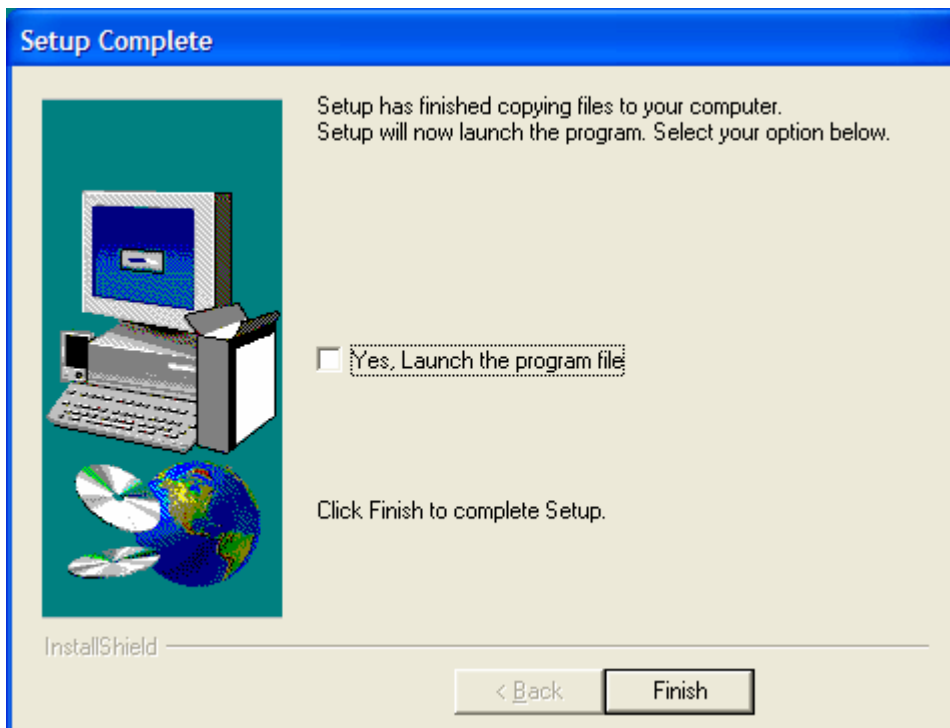
The Trackbase Lite setup will now be confirmed, check that the details are correct and then click on 'Next' to continue.



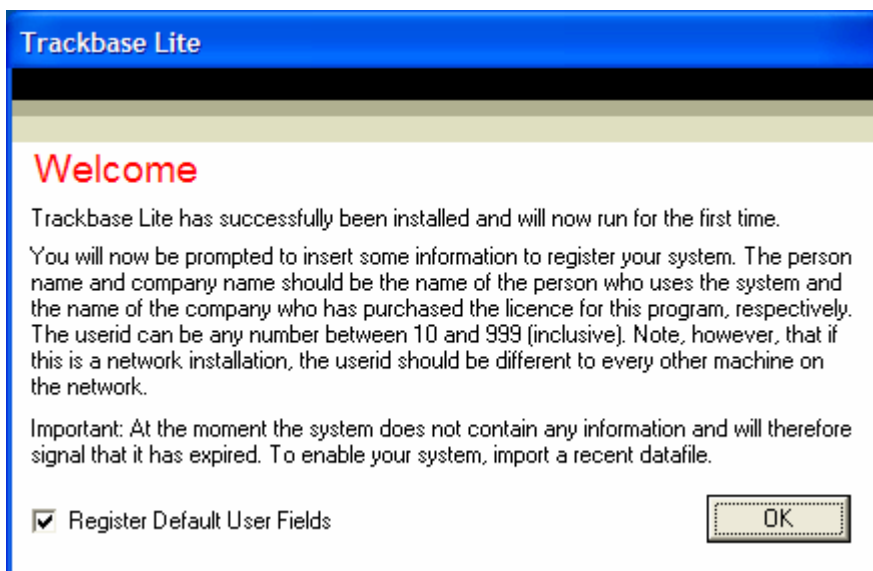
Trackbase Lite will now install on your computer.



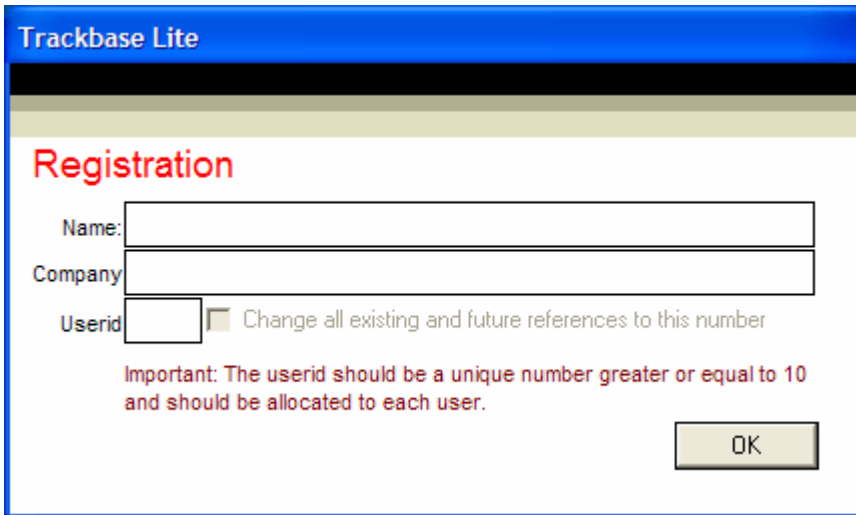
Once the installation has completed you can choose to tick the box next to 'Yes, Launch the program file' and Trackbase Lite will open when you click on the 'Finish' button.



When Trackbase Lite first opens you will see the window below. Please click OK to continue.

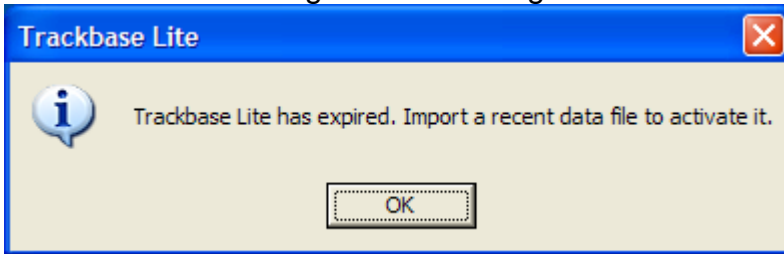


The next window you will see is the Registration window; just enter your Name, Company name and a Userid number between 10 and 99. Click on the OK button to continue.

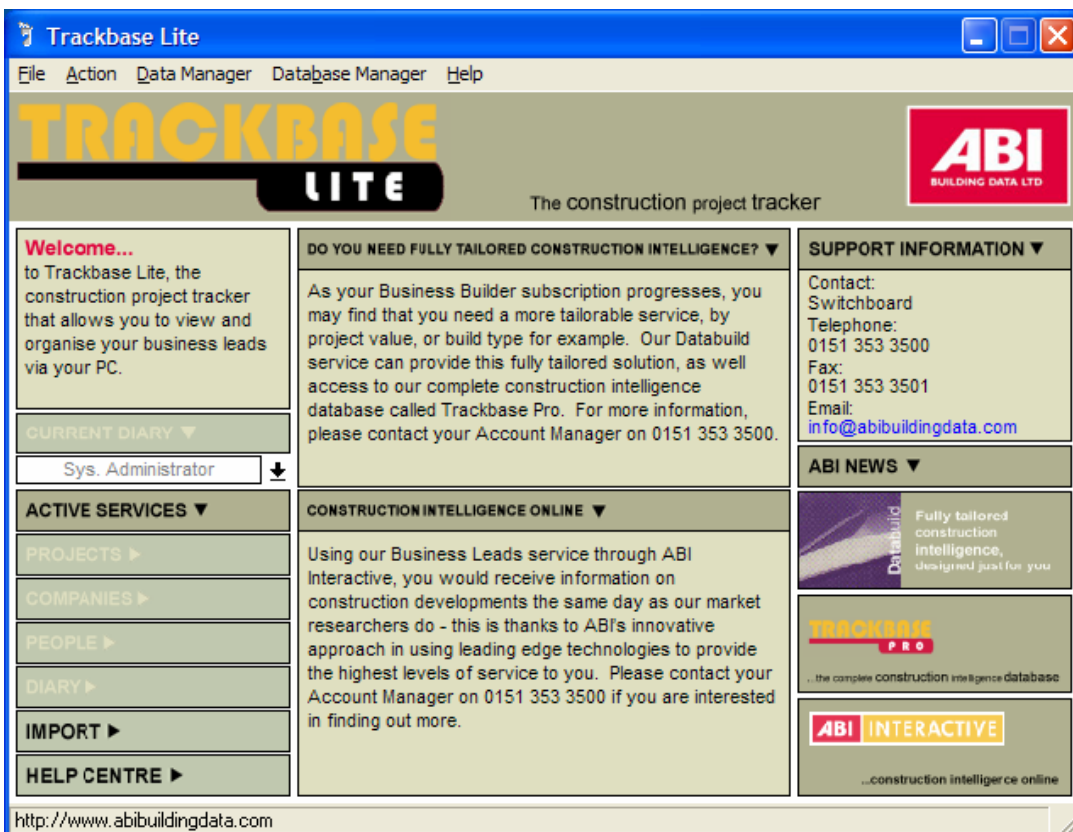


The registration window has a blue title bar with the text "Trackbase Lite". The main content area has a light beige background with the word "Registration" in red. It contains three input fields: "Name:", "Company", and "Userid". The "Userid" field is a small box with a dropdown arrow. To the right of the "Userid" field is a checkbox and the text "Change all existing and future references to this number". Below the fields is a red warning message: "Important: The userid should be a unique number greater or equal to 10 and should be allocated to each user." At the bottom right is an "OK" button.

You will see a message box indicating that Trackbase Lite has expired.



Click on OK to continue and the main window of Trackbase Lite will then appear.



The main window has a blue title bar with "Trackbase Lite" and standard window controls. The menu bar includes "File", "Action", "Data Manager", "Database Manager", and "Help". The header area features the "TRACKBASE LITE" logo in large yellow and black letters, the tagline "The construction project tracker", and the "ABI BUILDING DATA LTD" logo. The main content area is divided into several sections: a "Welcome..." message, a "CURRENT DIARY" section with a dropdown menu showing "Sys. Administrator", a "DO YOU NEED FULLY TAILORED CONSTRUCTION INTELLIGENCE?" section with descriptive text, a "CONSTRUCTION INTELLIGENCE ONLINE" section with more descriptive text, a "SUPPORT INFORMATION" section with contact details (Switchboard, Telephone: 0151 353 3500, Fax: 0151 353 3501, Email: info@abibuildingdata.com), and an "ABI NEWS" section. At the bottom, there are logos for "TRACKBASE PRO" and "ABI INTERACTIVE". The status bar at the bottom left shows the URL "http://www.abibuildingdata.com".