

# Saving a report as a PDF

In order to save your reports to PDF, you are required to install Ghostscript on your PC and add it's bin directory to the system path. The Ghostscript program can be downloaded by selecting one of the links from the 'Downloads' section of the 'Help Centre', as seen in the screen below.

## Downloads

The Trackbase software can be downloaded below. Please ensure that you have

Trackbase software	Lite	Pro
Full version	<a href="#">download</a>	<a href="#">download</a>
Upgrade from Business Builder	<a href="#">download</a>	
Upgrade from Trackbase 3		<a href="#">download</a>
Trackbase user guide	Lite	Pro
Word	<a href="#">download</a>	<a href="#">download</a>
PDF	<a href="#">download</a>	<a href="#">download</a>
Help file (included with software)	<a href="#">download</a>	<a href="#">download</a>
PDF related software	Web	FTP
Ghostscript	<a href="#">download</a>	<a href="#">download</a>
Adobe Reader	<a href="#">download</a>	
Networking software	Win95/98/ME	WinNT/XP/2000
Server	<a href="#">download</a>	<a href="#">download</a>
Client	<a href="#">download</a>	<a href="#">download</a>
tb.db database file (empty)	<a href="#">download</a>	<a href="#">download</a>
Previous software	Version	
Business Builder	<a href="#">download</a>	
Trackbase 3	<a href="#">download</a>	
Trackbase 2.5 -> Trackbase 3 upgrade	<a href="#">download</a>	

## Web download

By selecting the 'Web' download you will be taken to a web site where you can choose from the latest releases of Ghostscript, as shown below:

### Latest File Releases

Package	Version	Date	Notes / Monitor	Download
<a href="#">AFPL Ghostscript</a>	8.51	April 18, 2005	-	<a href="#">Download</a>
<a href="#">gnu-gs</a>	7.07	May 17, 2003	-	<a href="#">Download</a>
<a href="#">GPL Ghostscript</a>	8.15	September 22, 2004	-	<a href="#">Download</a>
<a href="#">gs-beta</a>	8.33	November 21, 2004	-	<a href="#">Download</a>
<a href="#">gs-devel</a>	7.30	September 6, 2002	-	<a href="#">Download</a>

You should select GPL Ghostscript and then select the Windows download:

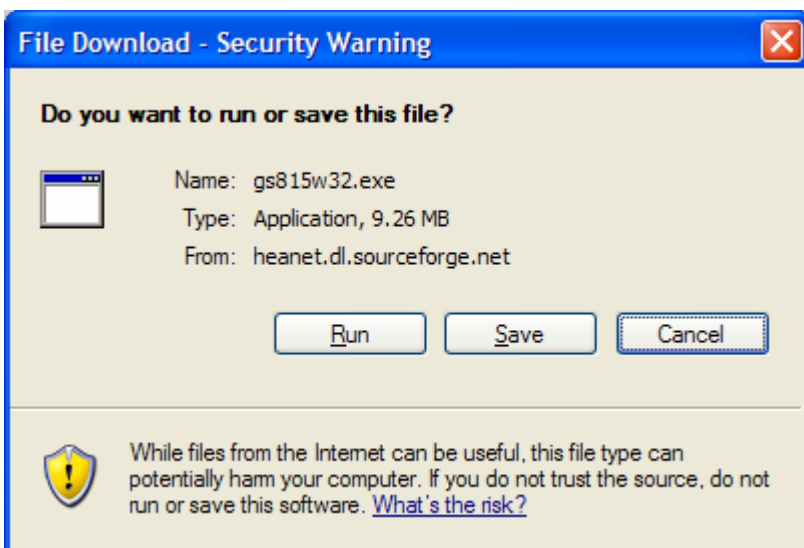
### GPL Ghostscript

8.15	2004-09-22 17:00		
<a href="#">Download ghostscript-8.15.tar.bz2</a>	6931694	3162 Any	Source .bz2
<a href="#">Download ghostscript-8.15.tar.gz</a>	8232686	2243 Any	Source .gz
<a href="#">Download gs815os2.zip</a>	9655891	3323 i386	.zip
<a href="#">Download gs815w32.exe</a>	9713152	45002 i386	.exe (32-bit Windows)

You will then be asked to select the location where you want obtain the file.

Location	Continent	Download
Dublin, Ireland	Europe	9486 kb
Saint Petersburg, Russia	Europe	9486 kb
Bern, Switzerland	Europe	9486 kb
Ishikawa, Japan	Asia	9486 kb

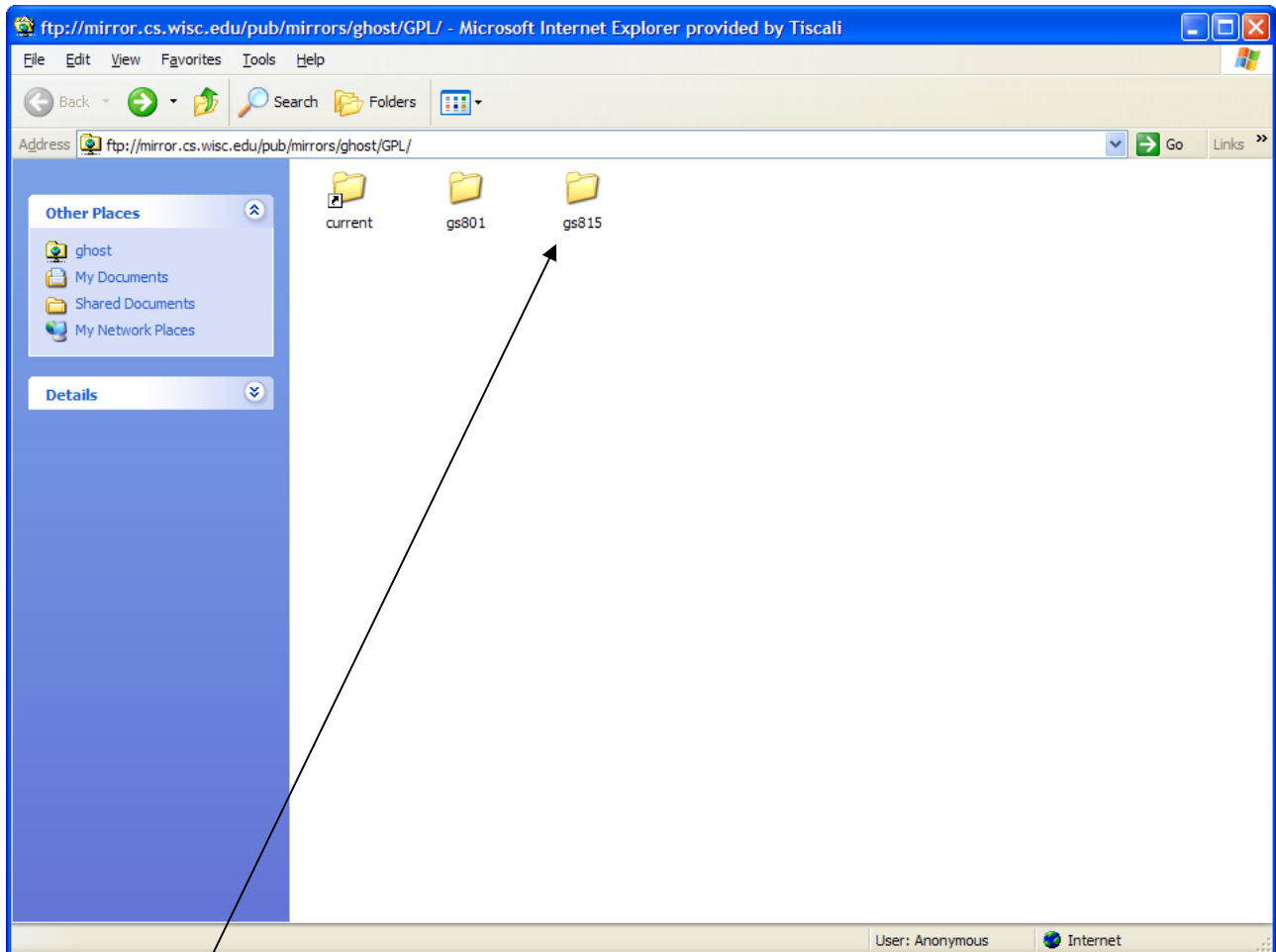
Select 'Dublin, Ireland' as your choice of location. This will then be direct you to the site and prompt you to save or run the file, as shown below:



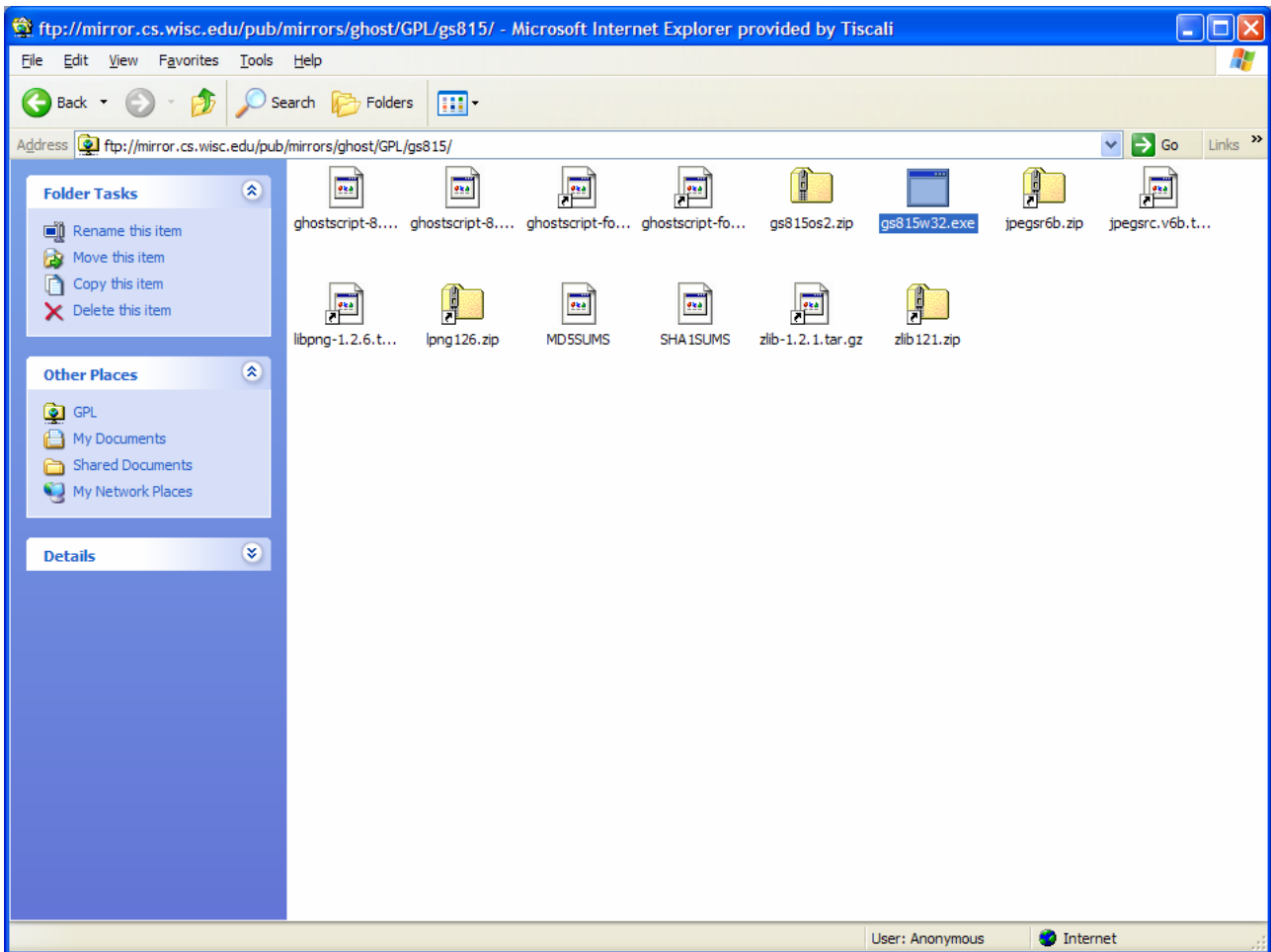
Select 'Run' and then 'Run' again, if prompted. You should then be taken to the 'Self-Extractor/Install wizard (see Installing Ghostscript).

## **FTP download.**

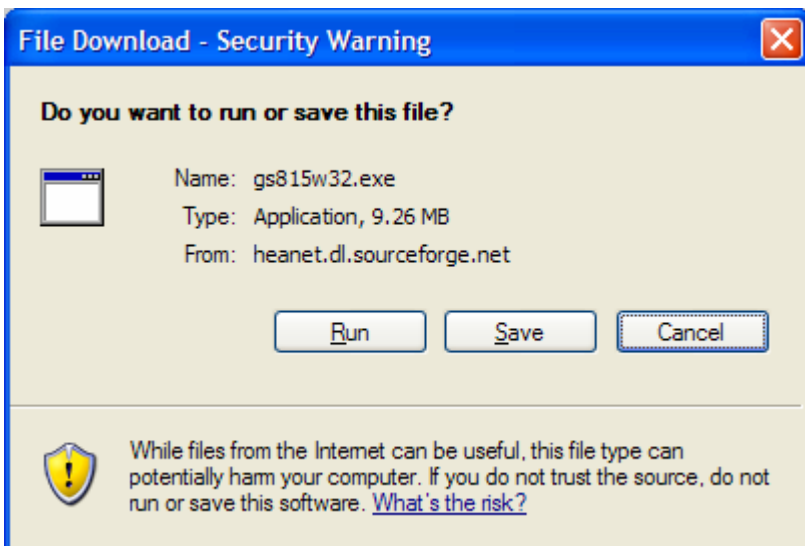
By selecting the 'FTP' download you will be taken to an FTP site where you can choose from the latest releases of Ghostscript, as shown below:



Double-click 'gs815' and locate 'gs815w32.exe', as shown below.

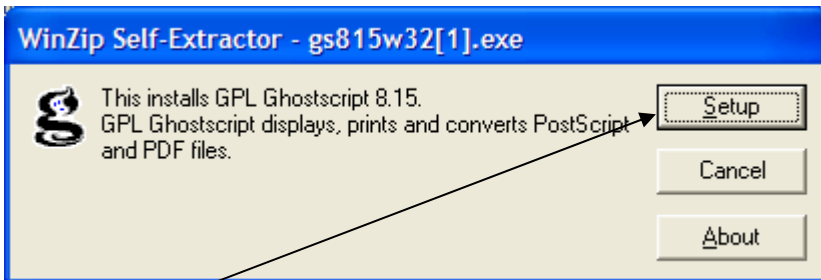


'Right-click' this file and select 'Open'. You should then be prompted to 'Save' or 'Run' the program, as shown below.

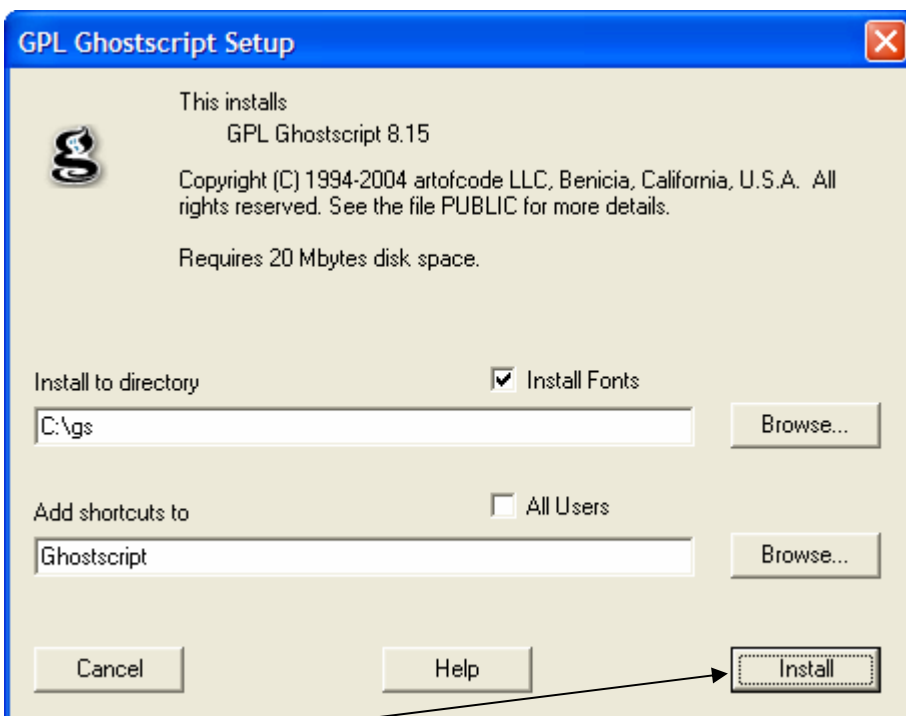


Select 'Run' and then 'Run' again, if prompted. You should then be taken to the 'Self-Extractor/Install wizard (see Installing Ghostscript).

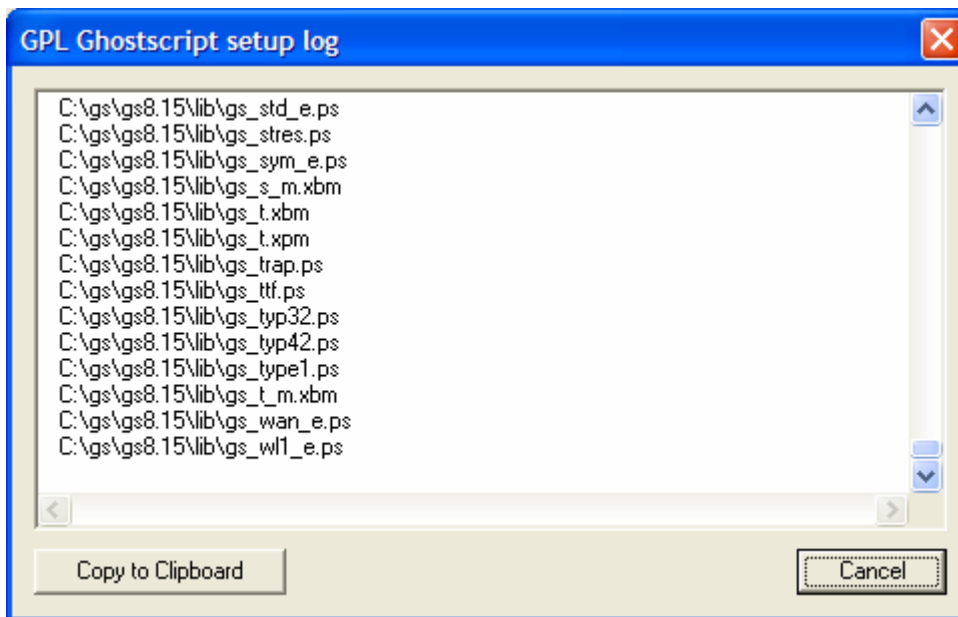
## Installing Ghostscript



Select 'Setup' and then choose a location for Ghostscript, as show below.



Select 'Install' and wait for the 'setup log' (below) to complete.

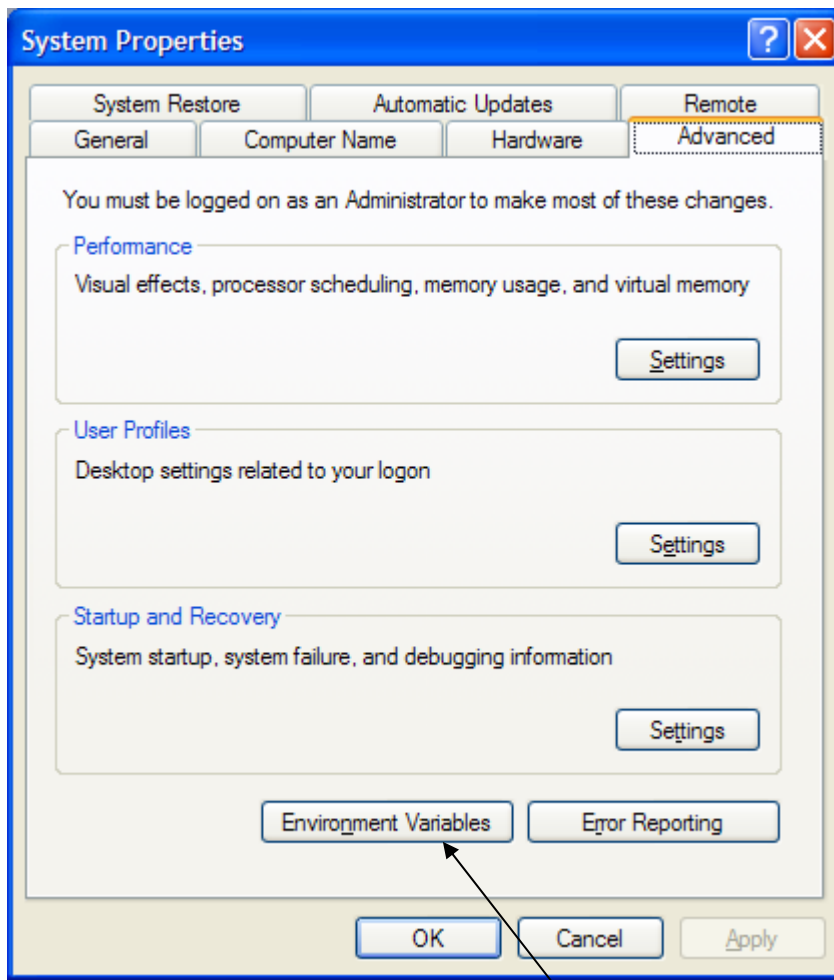


## ***Edit Environment Path***

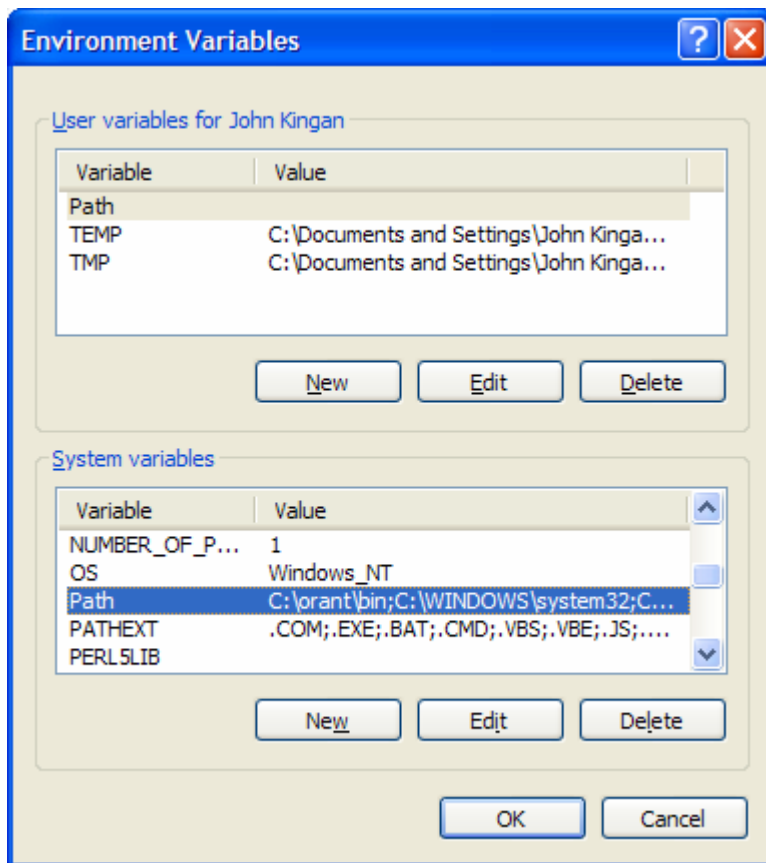
On completion, you should edit your system path.

**To edit your path with Windows 2000/XP, follow these steps:**

1. From the desktop right click My Computer and click properties.
2. In the System Properties window click on the Advanced tab.

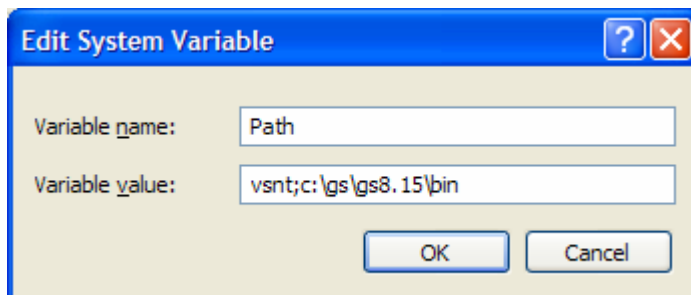


3. In the Advanced section click the Environment Variables button. Finally, in the Environment Variables window highlight the path variable in the Systems Variable section and click edit.



Add or modify the path lines with the paths you wish the computer to access. Each different directory is separated with a semicolon as shown below.

c:\cvsnt; c:\gs\gs8.15\bin



For example, if you installed the transforms in the default directory, add this to the end of the current path: c:\gs\gs8.15\bin  
 Click Apply.  
 The changes take effect immediately.

### To edit your path with Windows 98, follow these steps:

Open C:\Autoexec.bat in an editor.  
 Add this line to the end of the file: SETPATH=directory

For example, if you installed, accepting the default directory, add this to the end of the file:  
SET PATH=c:\gs\gs8.15\bin;