

---

# Trackbase client/server setup

This setup requires all PC's to have a permanent connection to a central server when Trackbase is used. All work performed by users is stored in a central database file (on the server) and can be viewed by all machines on the network. Updates are therefore immediate. Trackbase is installed onto each PC along with Sybase client software. Database server software is installed on the network server. This is typically implemented across a LAN (local Area Network).

The clients can be any of the following:- Windows 9x, NT, 2000, ME or XP.

The server can be any of the following:- Windows 9x, NT, 2000, ME, XP or Novell.

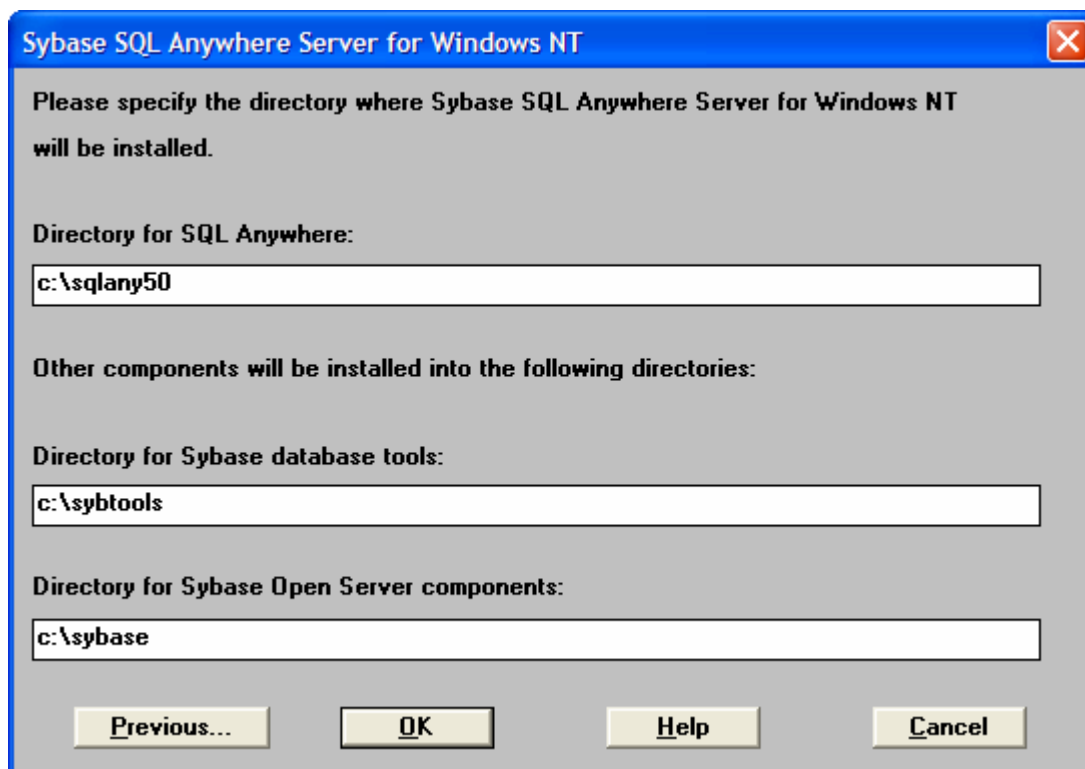
Trackbase and the networking software can be downloaded from the "Downloads" section of the Trackbase Help Centre at <http://www.abibuildingdata.com/trackbase/helpcentre>

## Configuring the server

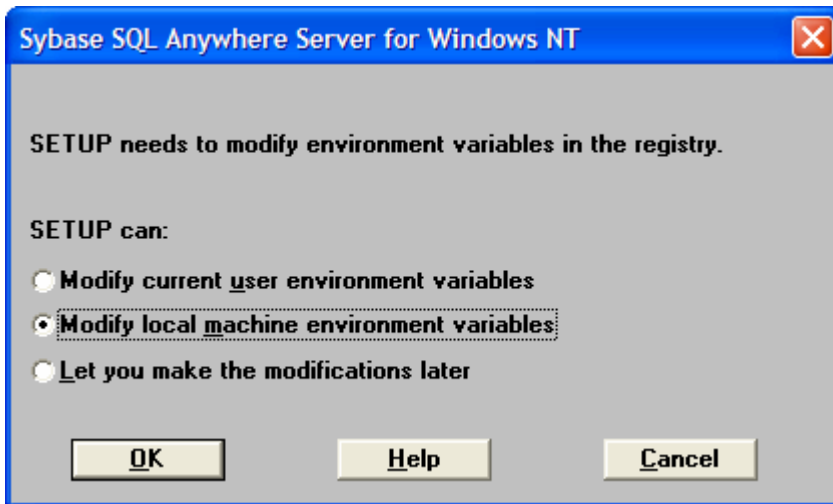
1. Install the Sybase SQL Anywhere Server:



2. Press OK on the next screen
3. The next screen asks you where to install the software. You may accept the defaults directories:



4. Press OK on the next three screens.
5. The software will now install.
6. When you are asked to make modifications, just press OK.

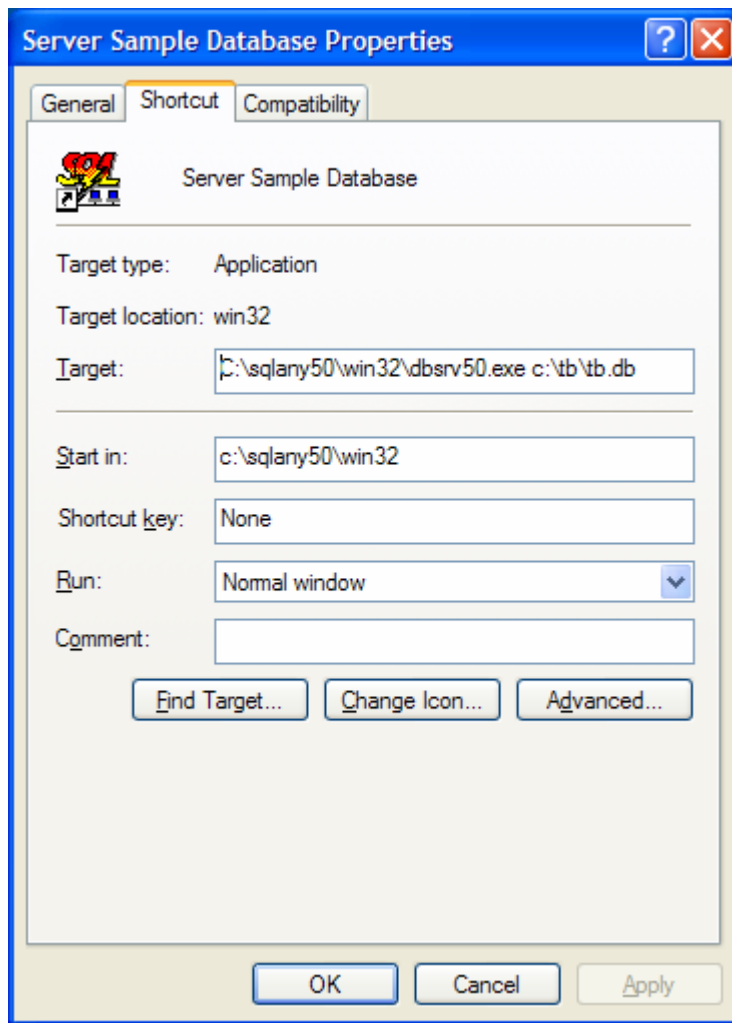


7. Press OK to continue.
8. When prompted for what type of licence you wish to use, select "Per seat licence".
9. Press OK to continue.
10. Enter your name and company name and click OK to continue and complete the installation.

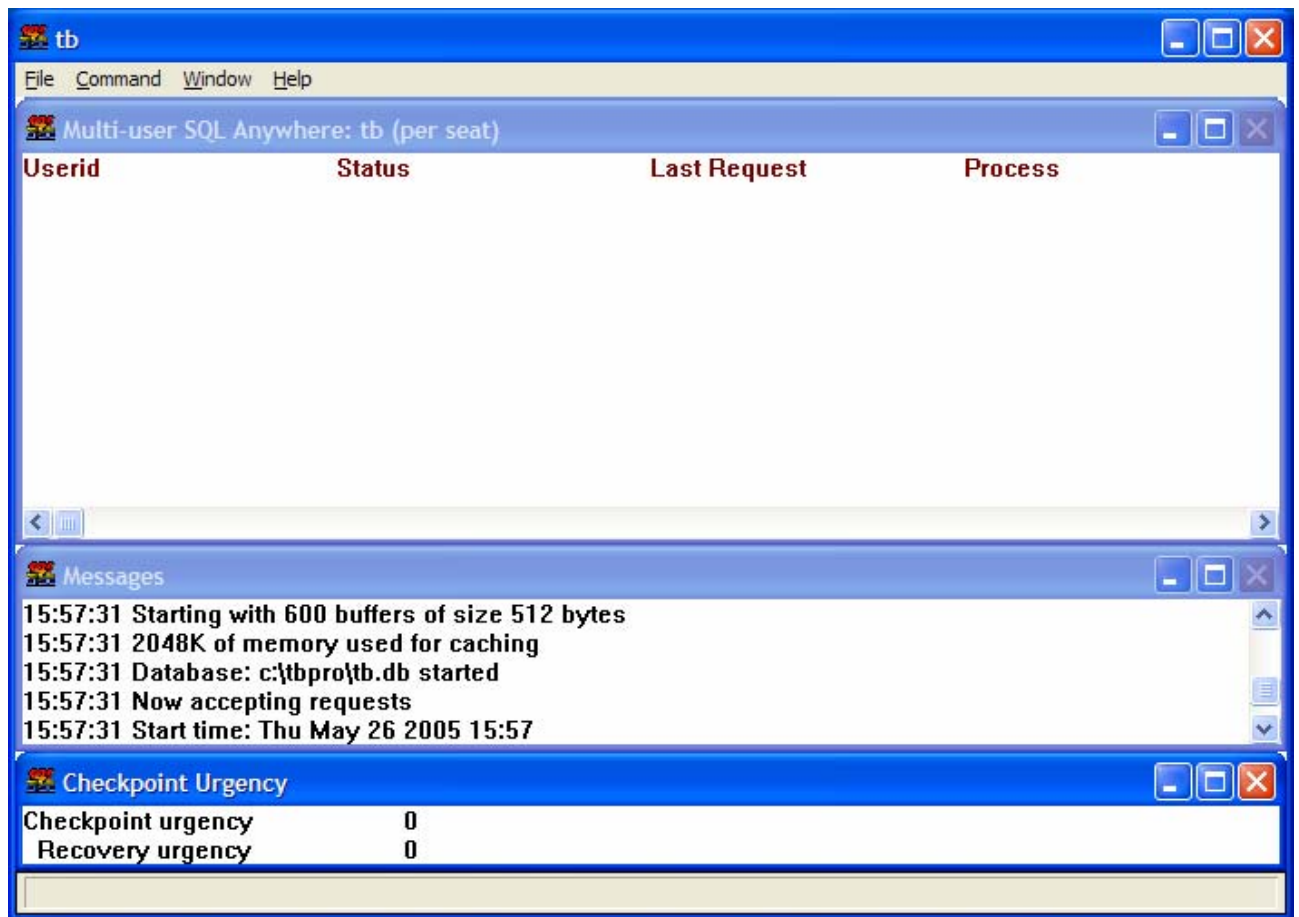
The database engine should now be started in one of the two ways detailed below:

### **Starting the database server using a shortcut.**

1. Go to your Start menu and choose Sybase SQL Anywhere 5.0 menu.
2. Create a shortcut on your desktop to Server Sample Database.
3. Go to the shortcut and edit the properties of it by right clicking on it and choosing properties.
4. Change the target path so that it points at the database you wish to use. The database should be called TB.DB. An empty database can be obtained from the downloads section of the Trackbase Help Centre, or if you have already been using Trackbase on a standalone PC you may like to copy this database file to the server.



5. Click on Apply and then close the window.
6. You can rename the shortcut if you wish to.
7. Run the shortcut.
8. The database should start. Please note: This may take a short while.



9. Minimise the above screen.

This shortcut can be put in the Windows start up menu so that it loads up whenever the server is rebooted.

### Starting the database server as a service.

If you are running Windows NT, 2000 or XP you can add it as a service so that it runs automatically.

To create a service for Trackbase follow the below steps:

1. Go to the Start menu, choose Programs, followed by Sybase SQL Anywhere 5.0
2. Click on 'Sybase Central'.
3. Click on 'Services'.
4. Double click on 'Add Service' on the right hand side of the screen.
5. Fill in all of the relevant options making sure that it runs as an automatic service
6. In the parameters, enter the following (the second line defines the location of the database):

```
-n tb
c:\tbii\tb.db
```

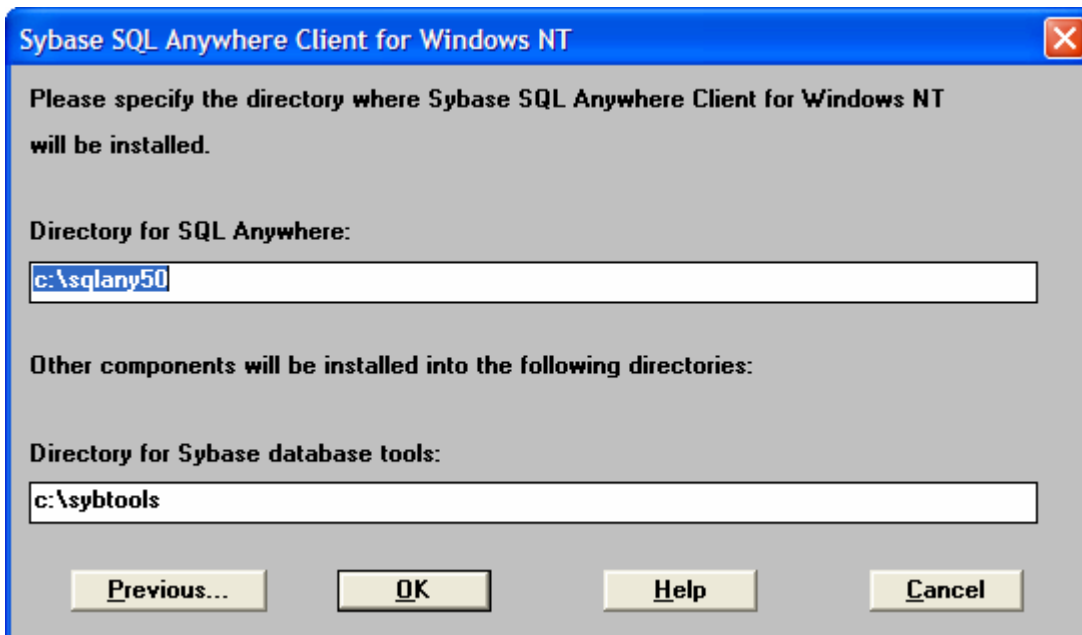
7. Start the service once you have finished entering all of the details.

## Configuring a client

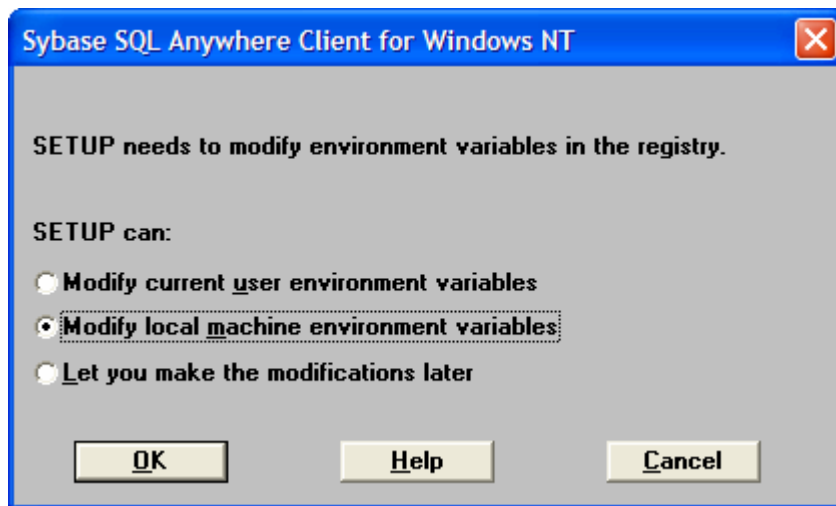
1. Select to install the Sybase SQL Anywhere Client and press OK.



2. Accept the install paths and press OK to continue.

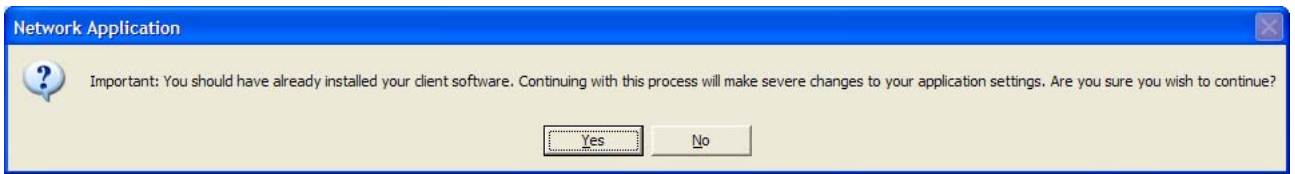


3. Press OK on the next two screens.
4. Press OK on the screen where it asks you to make modifications.



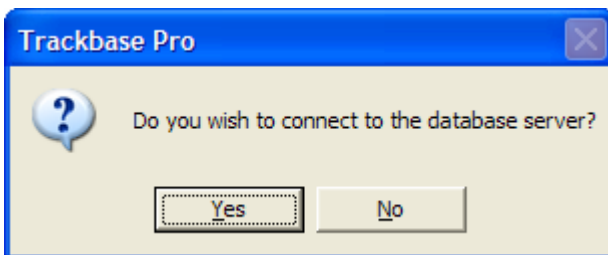
5. Press OK on the next three screens to complete the installation.
- 6. Reboot you PC. This is an essential step!**
7. Open Trackbase.
8. Register your details if you have not done so already (the user ID must be different on each client user).
9. Once in Trackbase go to the Database Manager menu and click on Network Application.
10. Press OK on the screen that asks you to enter the network password. This can be obtained by calling your Account Manager on 0151 353 3500.
11. Type in the network password in the box provided and click on 'Network...'

12. Press OK on the next message.



13. Press OK on the next screen that appears. If you did not reboot your PC at step 6 you will get the message "ERROR: unable to locate client executable." If this happens, return to step 6.

14. Trackbase will restart and will ask you if you wish to connect to the database server. Say Yes to this message:

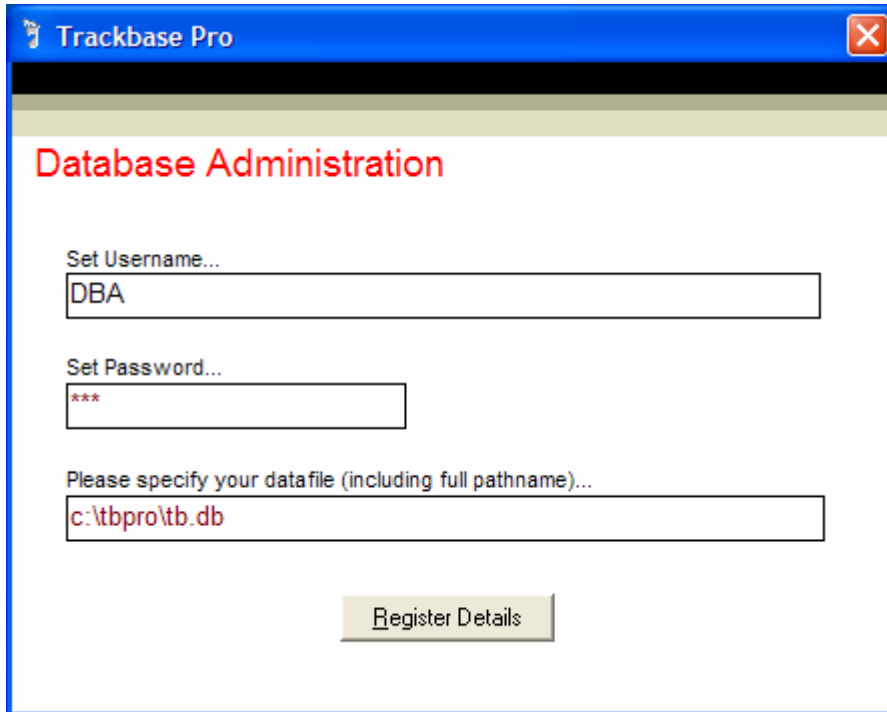


15. The next screen will ask you for the Administration details. You will need to enter the following:

Username: DBA (must be in capitals)

Password: sql (must be in lower case)

Datafile: C:\tbii\tb.db (this is the location of the local database)



The screenshot shows a window titled "Trackbase Pro" with a blue header bar. Below the header, the text "Database Administration" is displayed in red. The window contains three input fields: "Set Username..." with the text "DBA", "Set Password..." with three asterisks "\*\*\*", and "Please specify your datafile (including full pathname)..." with the text "c:\tbpro\tb.db". A button labeled "Register Details" is positioned at the bottom center of the window.

16. Click on Register Details.

17. Press OK on the next message and Trackbase will restart.

18. Say Yes to connect to the Database Server.

19. Trackbase should now start and connect to the main server database.