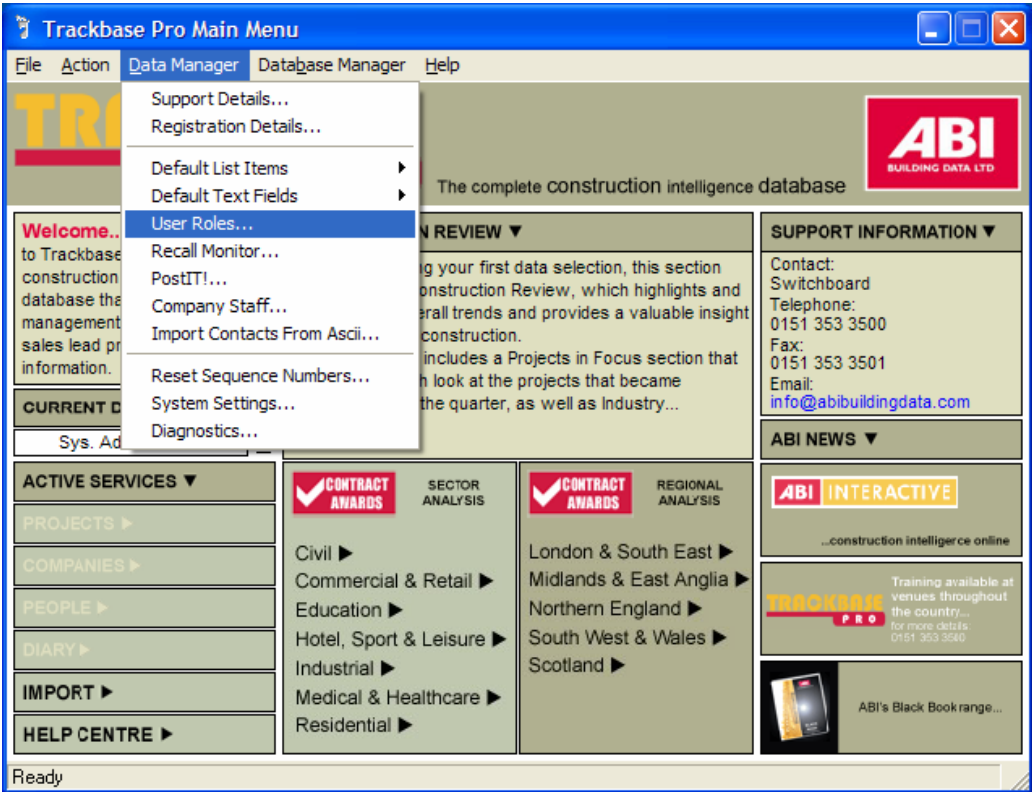
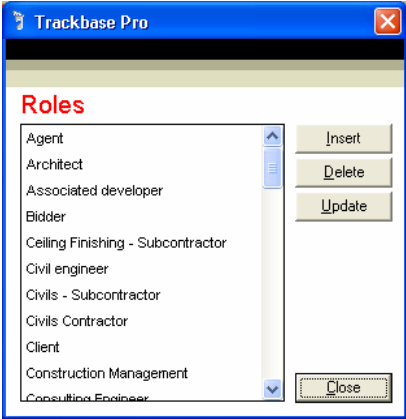


# Adding User Roles

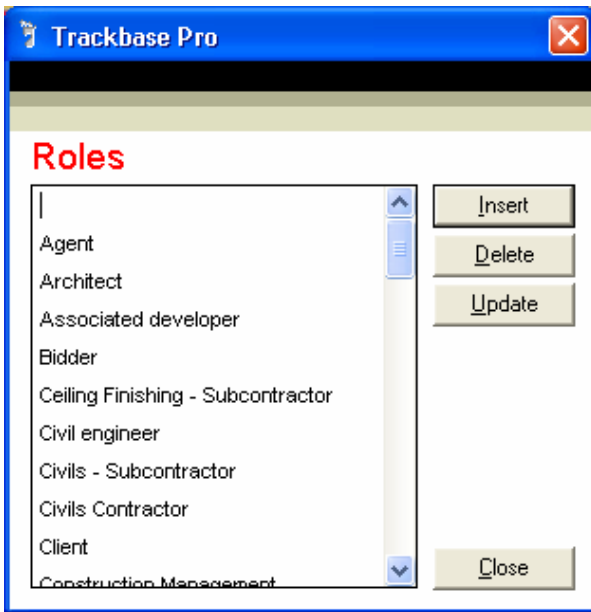
When you are using Trackbase Pro you may wish to add extra Roles to the database. To do this, go to the front screen of Trackbase Pro and click on 'Data Manager' and then 'User Roles...'



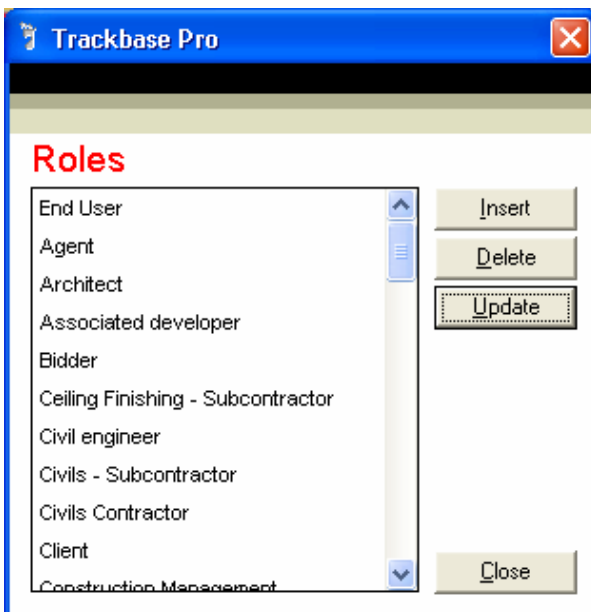
The window shown below will open. This window displays all of the User Roles available in the Trackbase Pro database.



To add another role, click on the 'Insert' Button and a new line will be added to the list. The cursor will flash to indicate that it is ready for text to be added.



Type in the Role that you wish to add, for example 'End User' and then click on the 'Update' button. Repeat this process for all the roles you wish to add to the database.



If you wish to delete any User Roles from the database, highlight the role you wish to remove and click on the 'Delete' button.

When you have finished adding or removing User Roles from the database, click on the 'Close' button to return to the front screen of Trackbase Pro.