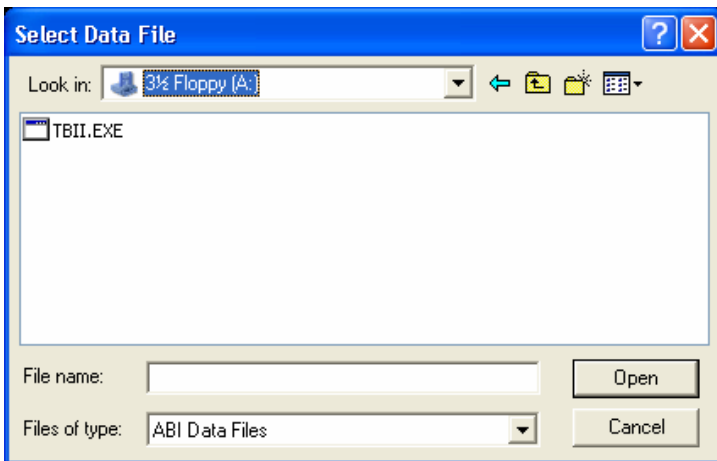


Importing your Data from Disk

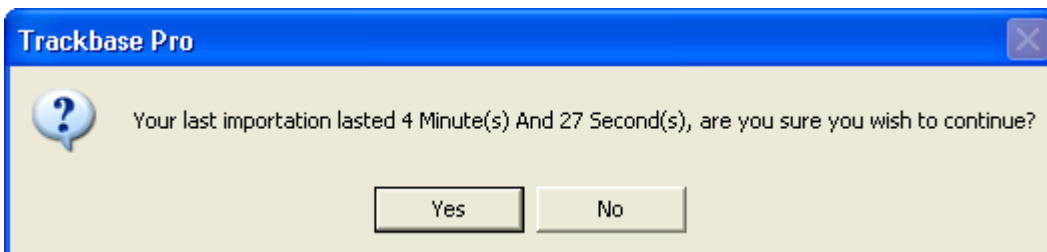
If you receive your data from ABI on a 3½" floppy disk, you need to place this disk into the disk drive before selecting the Import option from the main menu. When you click on the Import icon, Trackbase Pro will automatically search your a:\ drive for a data disk.

The screen below will appear. You can see that Trackbase Pro is looking in the computers a:\ drive and has located one ABI data file on the disk, called **Tbii.exe**

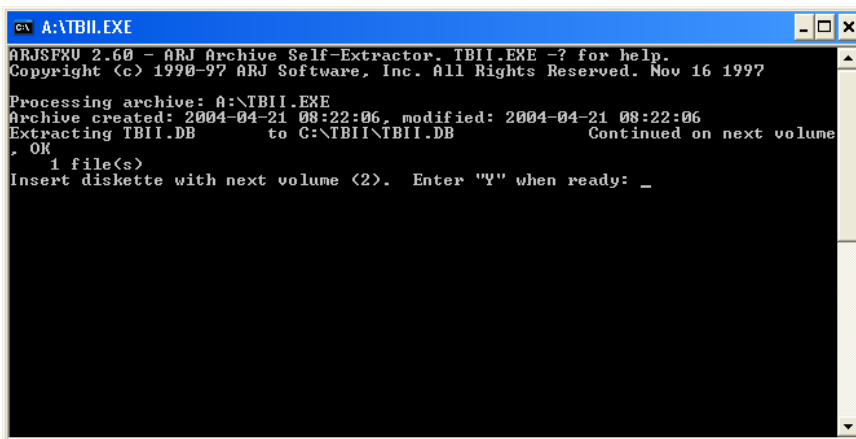


To start importing this data file, simply click once on the **Tbii.exe** file to highlight it and then click on the **'Open'** button.

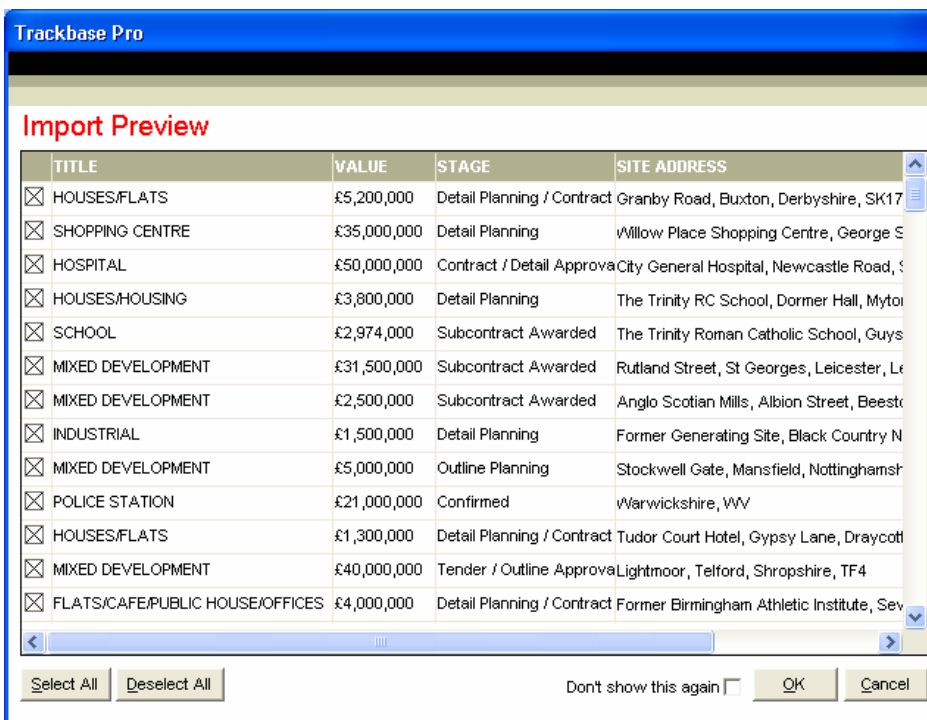
Once you have opened the file, Trackbase Pro will tell you how long the last import took and will ask you if you still want to continue. Click on the **'Yes'** button to continue. Trackbase Pro will then start importing the contents of the file into the system.



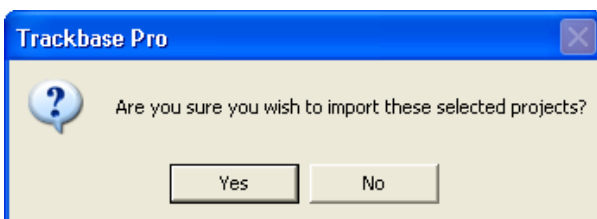
If you have more than one disk, you will see the screen below, prompting you to insert the second disk. Insert the second disk and type 'Y' to continue importing the data.



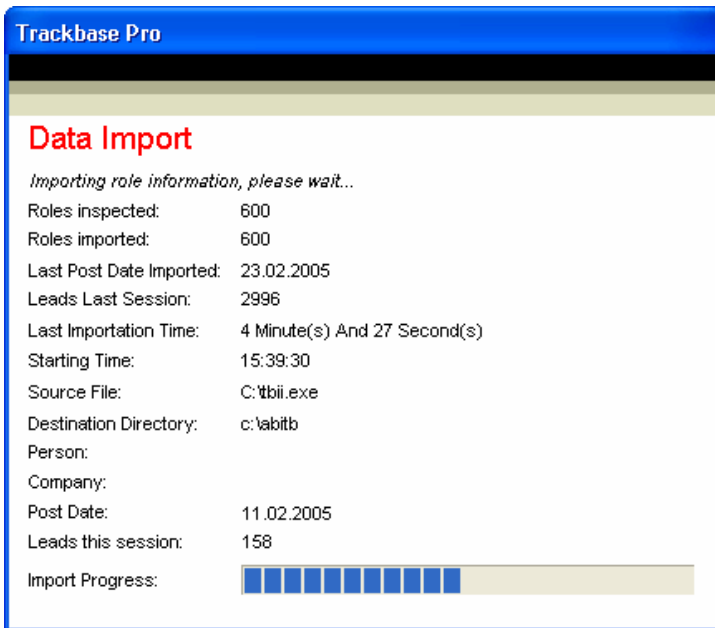
The Preview window will open, allowing you to see a brief overview of the projects you are about to import. You can choose not to import particular projects if you wish, by removing the "x" from the box to the left of the project. Click on 'OK' to import the projects into your database.



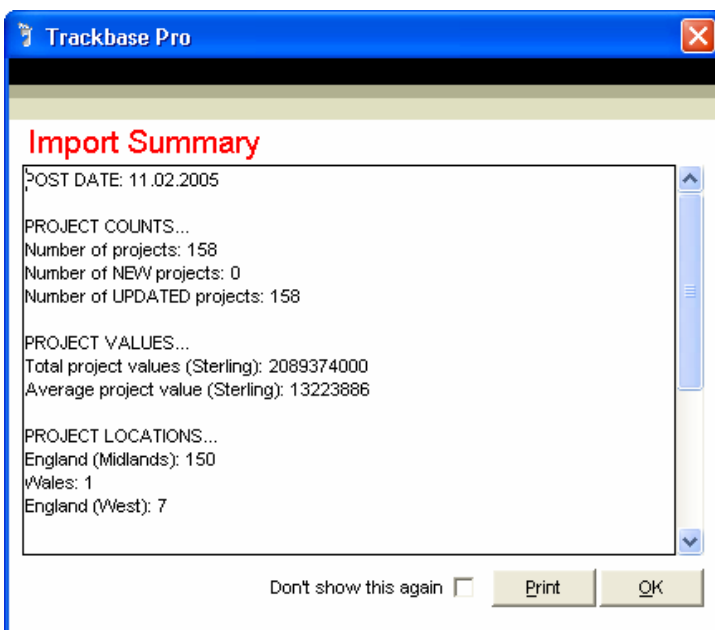
You will be asked to confirm that you wish to import the selected projects. Click 'Yes' to continue.



The import will begin. The indicator bar at the bottom of the window allows you to see the progress of the import.



Once the import has completed, you will see a summary of the projects imported as shown below. Click 'OK' to return to the front screen of Trackbase Pro.



Once you have started the import process, it is not advisable to try to cancel the operation in any way. Depending on the number of project details you receive and the speed of your computer the import can last from a few minutes to a few hours.