

Importing your Data

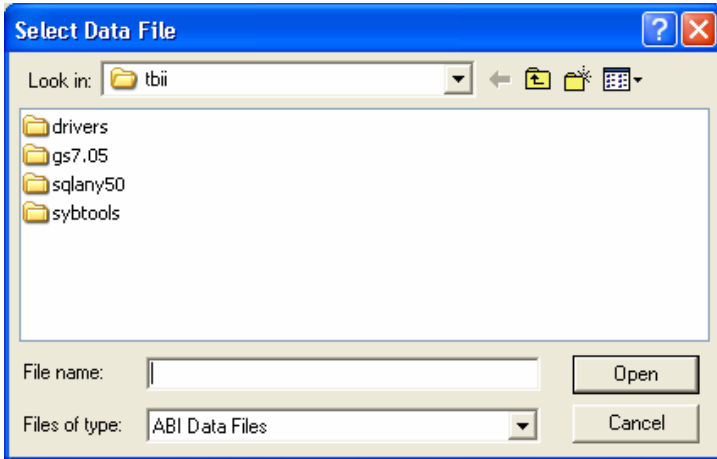
Open Trackbase Pro and click on the Import button.



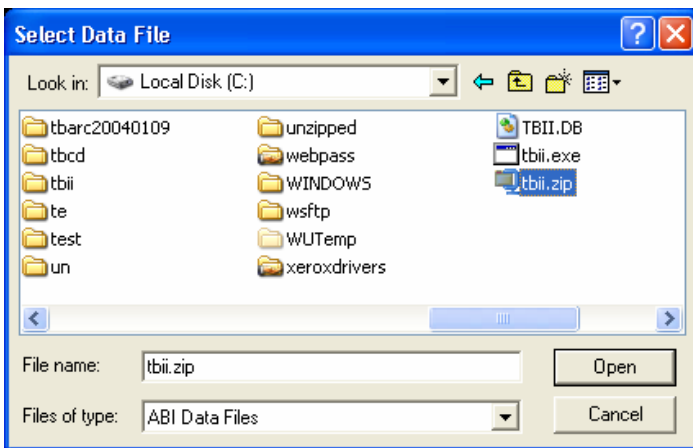
If you receive your data via email or from the Internet you may see the following message box. Click on the Continue button to locate your data file.



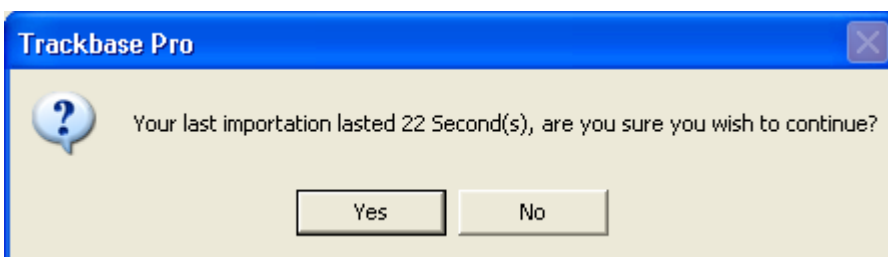
This will open the Select Data File window, as shown below:



Change the 'Look in' box to read Local Disk C and find the file Tbii.zip. Click on the Tbii.zip file once to highlight it and then click on the 'Open' box.

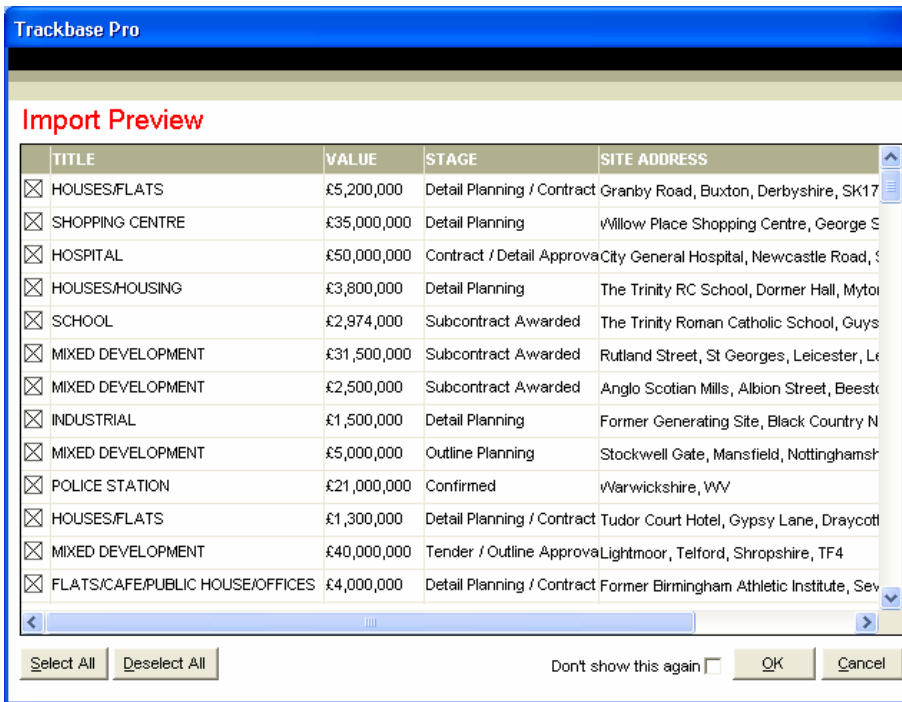


A message box will open telling you how long your last import took. Click on the 'Yes' button to continue with the import.

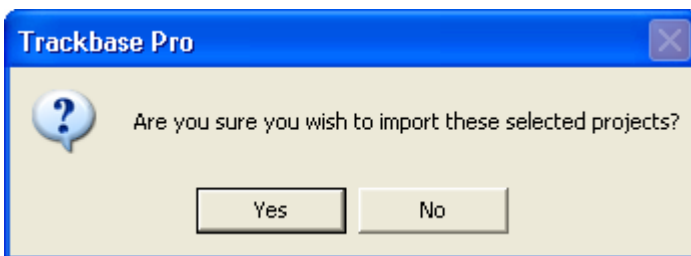


The Preview window will open, allowing you to see a brief overview of the projects you are about to import. You can choose not to import particular projects if you wish, by removing the "x" from the box to the left of the project.

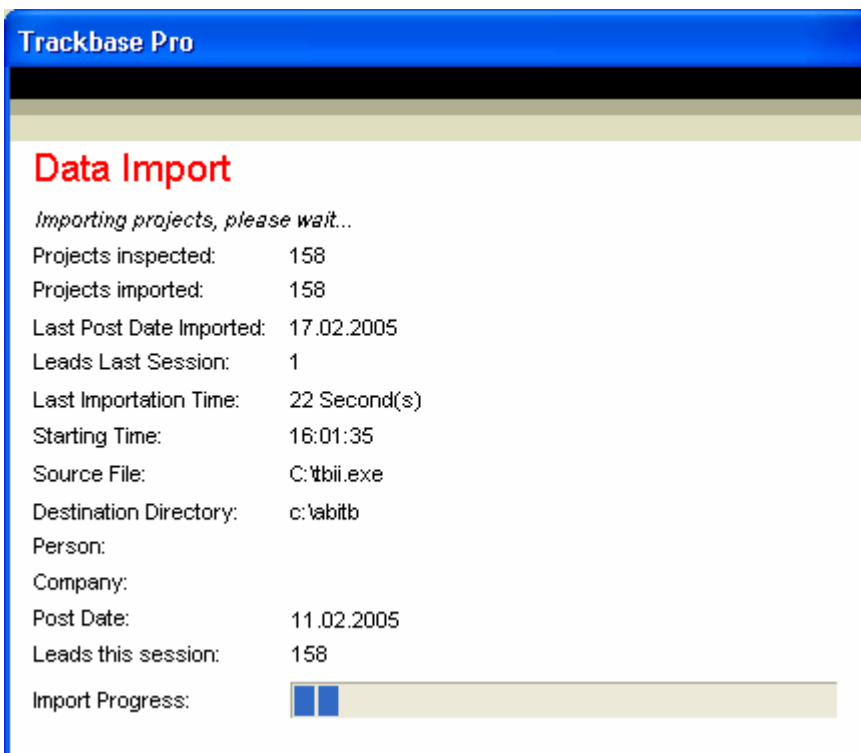
Click on OK to import the projects into your database.



You will be asked to confirm you wish to import the selected projects. Click 'Yes' to continue.



The import will begin. The indicator bar at the bottom of the window allows you to see the progress of the import.



Once the import has completed you will see a summary of the projects imported as shown below. Click 'OK' to return to the front screen of Trackbase Pro.

