

# Installing Trackbase Pro Upgrade

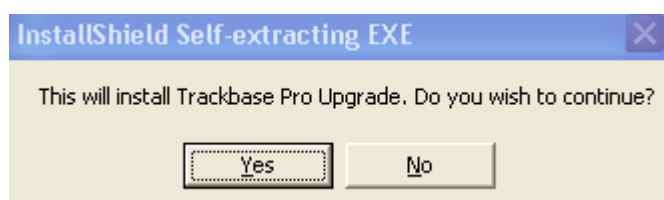
The Trackbase Pro Upgrade installation file can be obtained by two methods.

1. Download the file from [www.abibuildingdata.com/trackbase](http://www.abibuildingdata.com/trackbase) and save it to your desktop or local disk C. The download file is large, so this is only recommended if you have a broadband connection.
2. Request the file be sent to you on a CD-ROM from ABI Customer Support on 0151 353 3500.

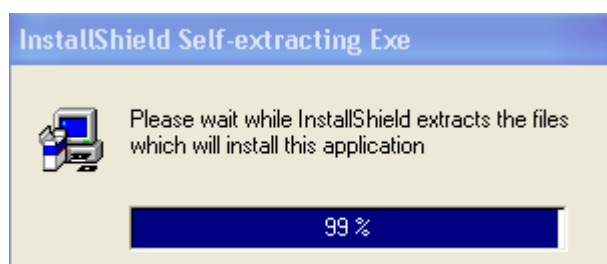
If you have downloaded the file from our website, save it to your computer and then, once the download has completed, locate the file 'Setupex.exe', and double-click on it to start the install process.

If you have received a CD-ROM, place the disk into your CD drive. It should automatically start the install process. If the CD does not auto-play, go to 'Start', 'Run' and then click on the 'browse' button. Select your CD drive from the drop down box and then double click on the file 'Setupex.exe' that you see in the main box. This will start the install process.

The Trackbase Pro Upgrade installation will begin.

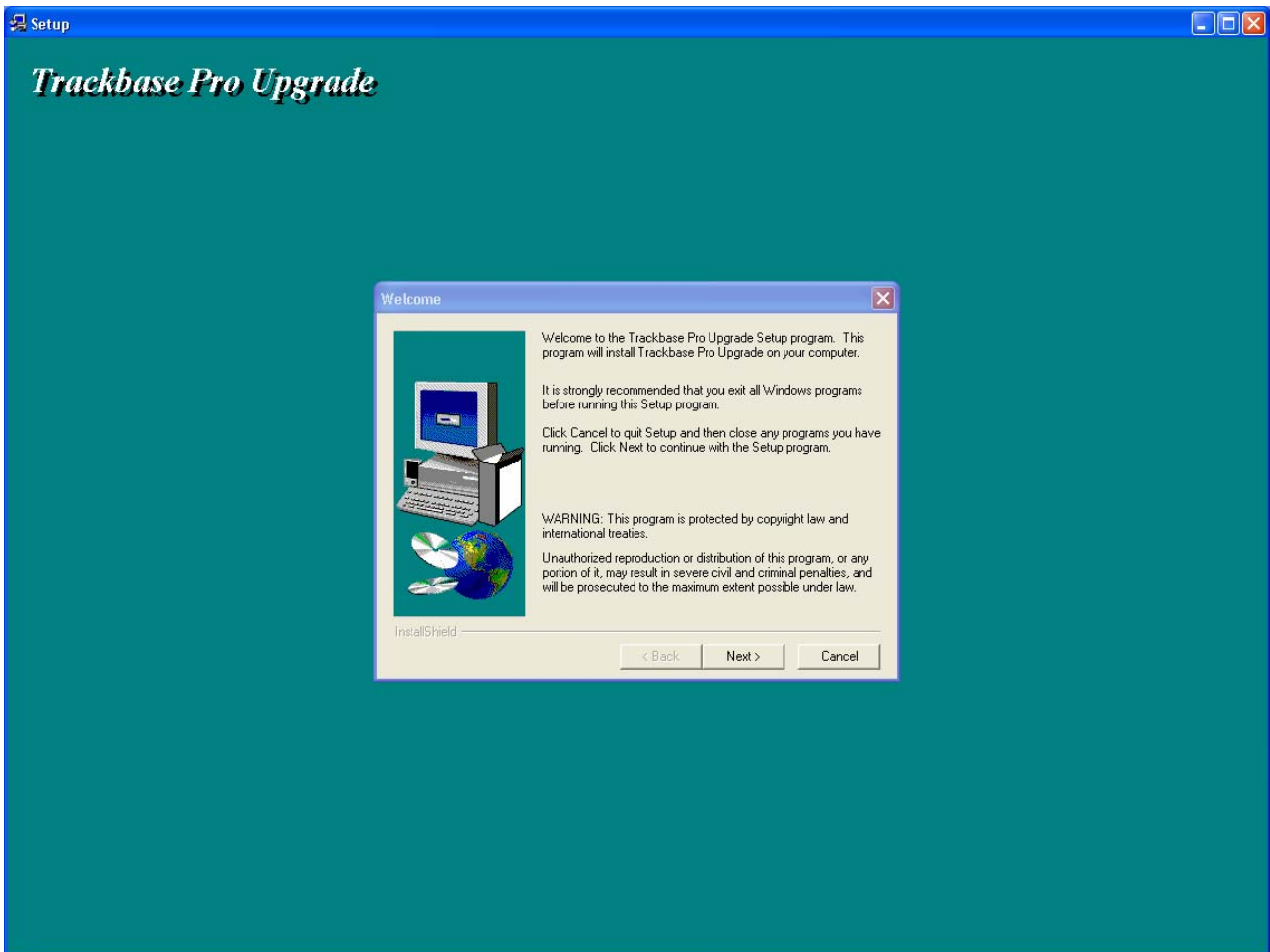


If you have closed all open programs and are ready to install Trackbase Pro Upgrade onto your computer click on the 'Yes' button to continue.



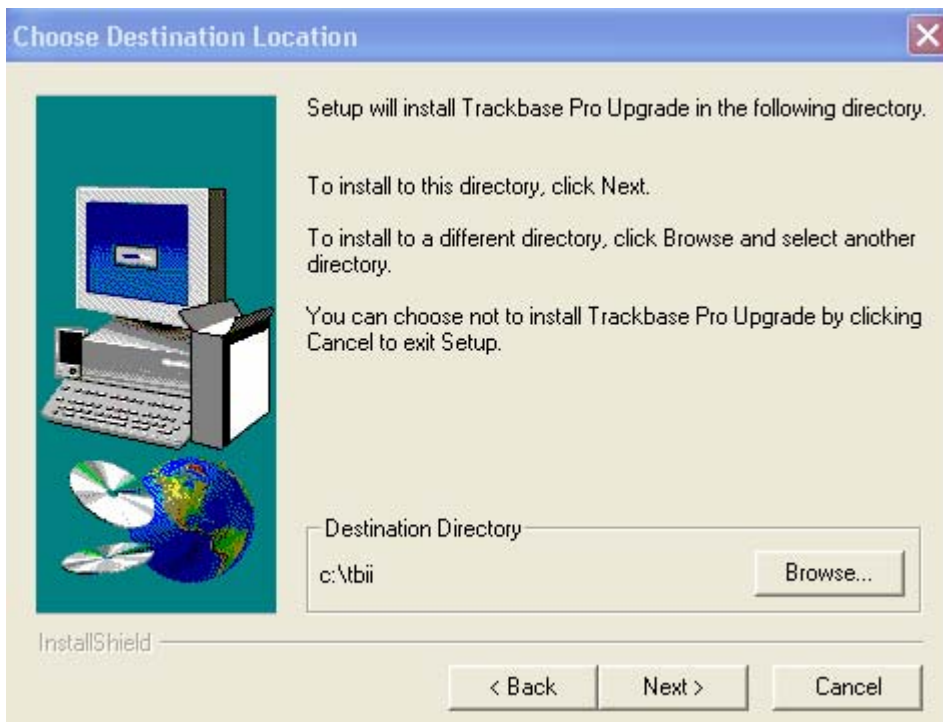
The next screen will welcome you to the installation of the Trackbase Pro upgrade. Here, it is recommended that you exit all programs before running the setup program

Click 'Next' to continue the installation.

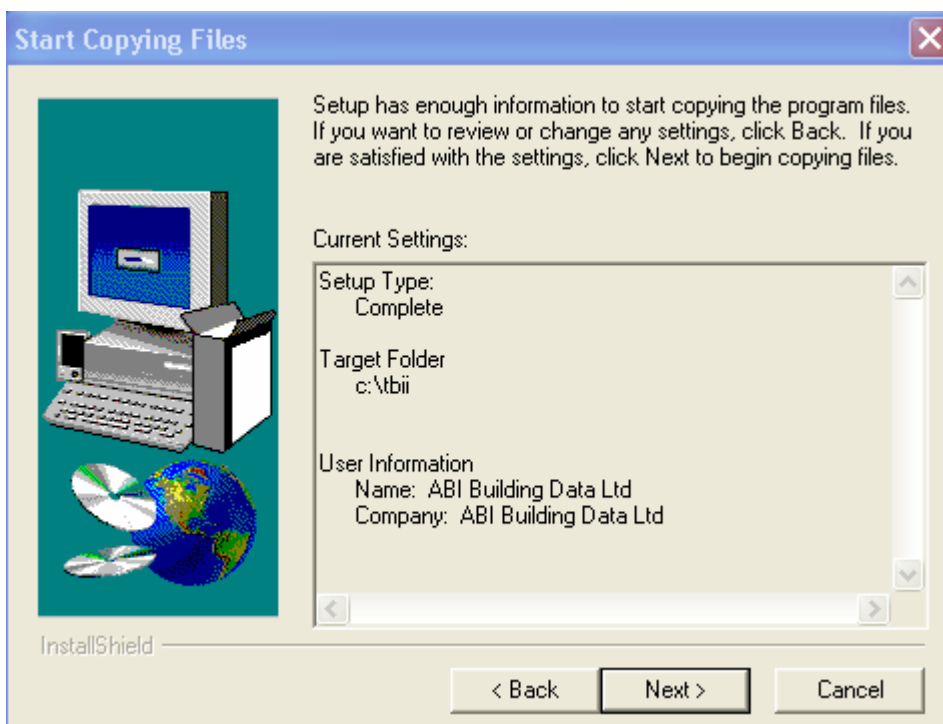


The next screen will tell you the location where Trackbase Pro Upgrade will be installed. If you need to change this location click on the 'Browse' button and you can select another location. However, we do recommend leaving Trackbase Pro Upgrade to install to its default locations if possible.

Click 'Next' to continue the installation.

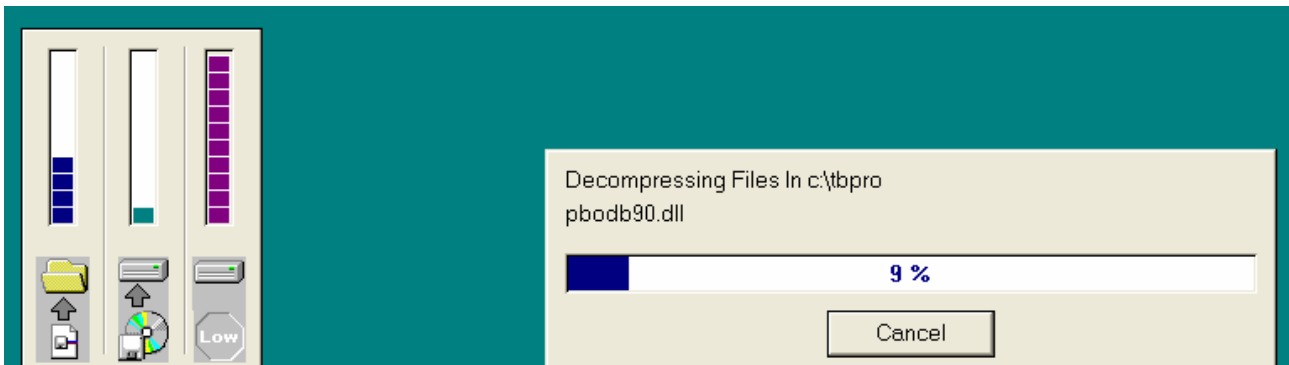


The Trackbase Pro upgrade setup will now be confirmed, check that the details are correct and then click on 'Next' to continue.

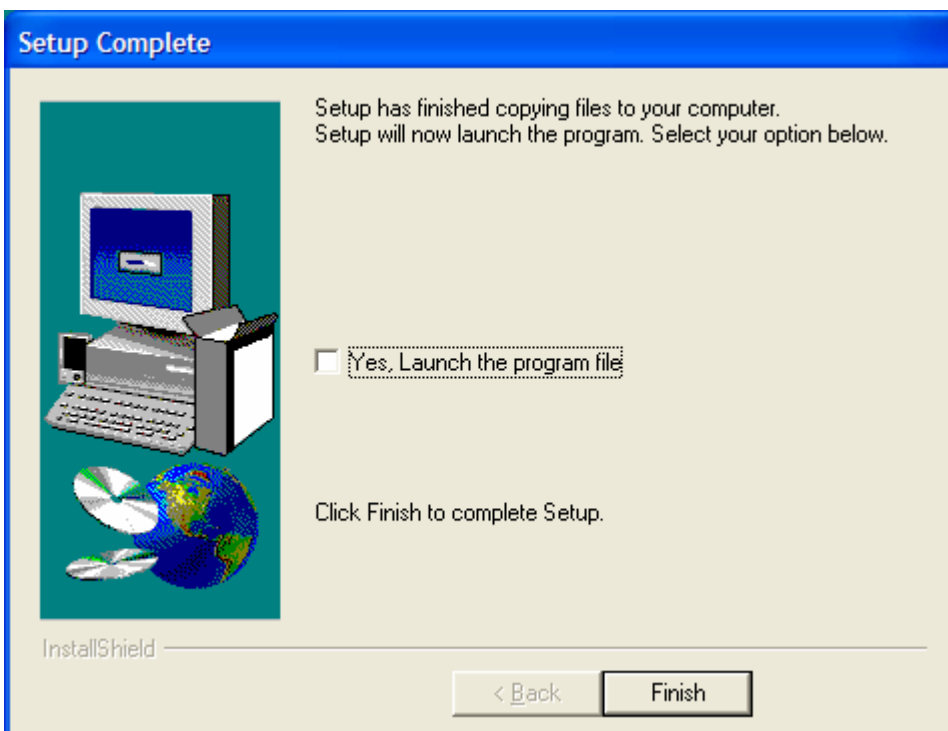


\*

Trackbase Pro Upgrade will now install on your computer.



Once the installation has completed you can choose to tick the box 'Yes, Launch the program file' and Trackbase Pro will open when you click on the 'Finish' button.

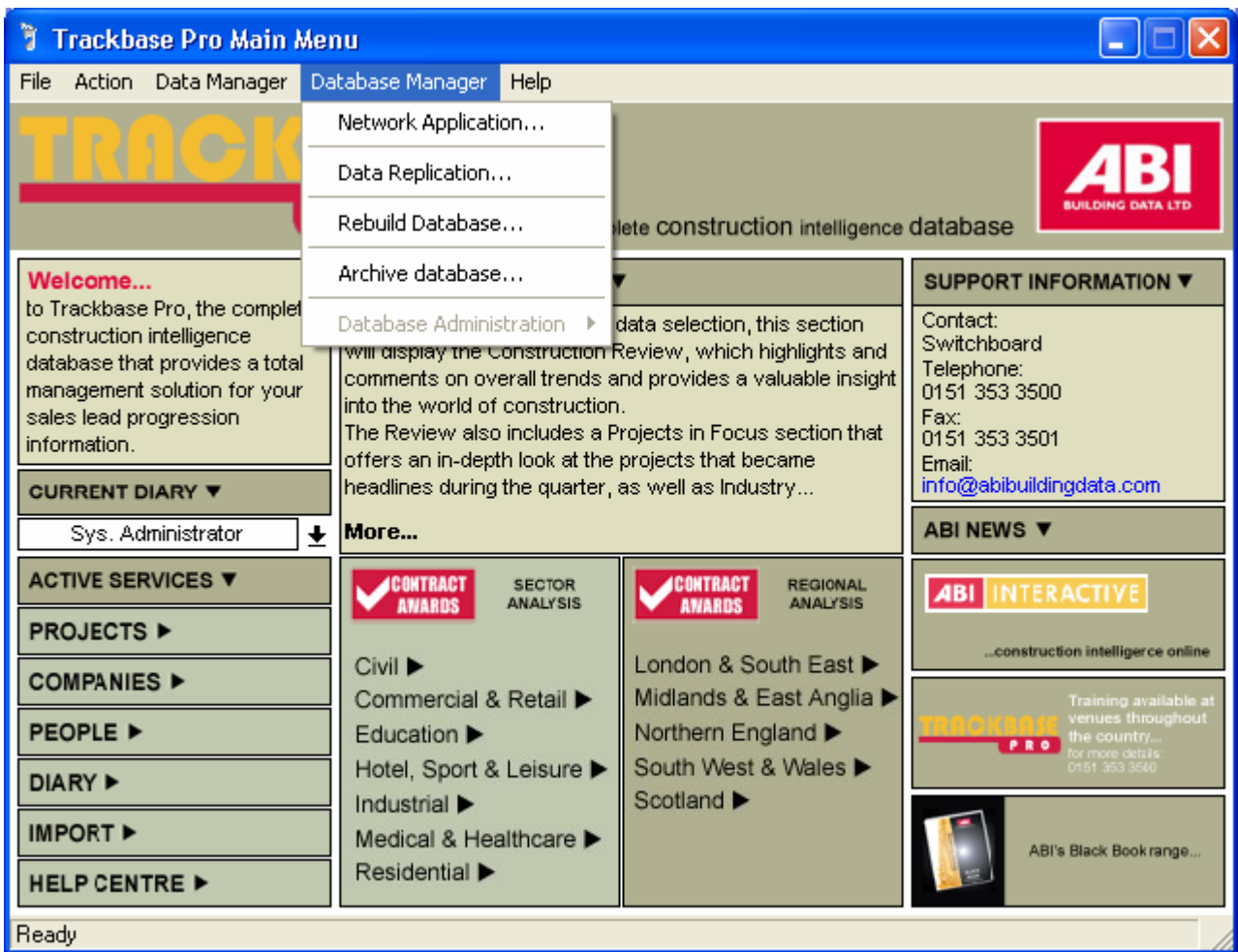


The main screen of Trackbase Pro will then appear

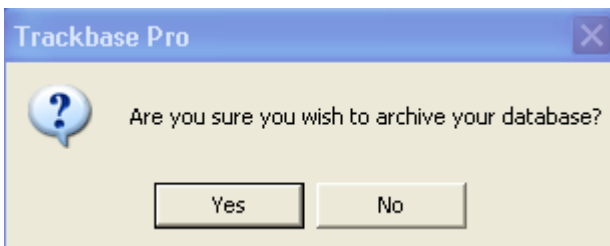


Trackbase Pro is now ready for use, however, to be able to view all the new functions correctly, a “Rebuild” must be completed. Prior to a “Rebuild” we recommend that you archive your database to prevent the loss of any information.

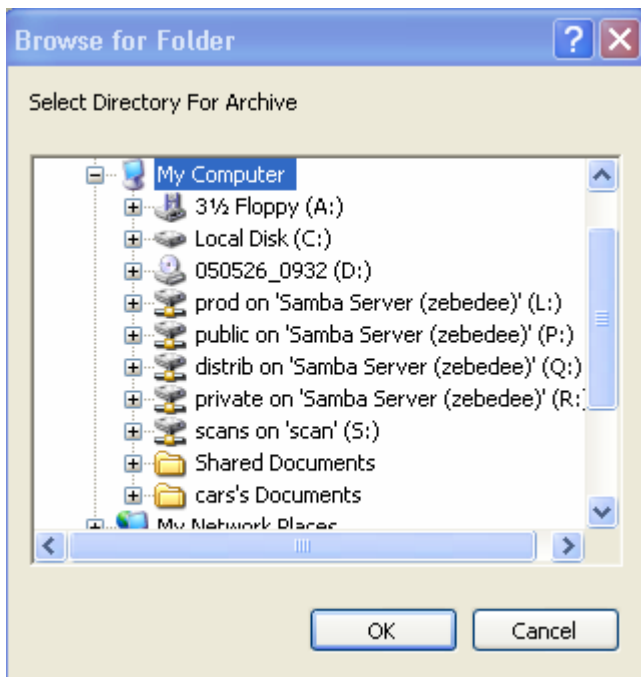
On the front screen of Trackbase Pro click into “Data Manager”



Here, click on “Archive database”



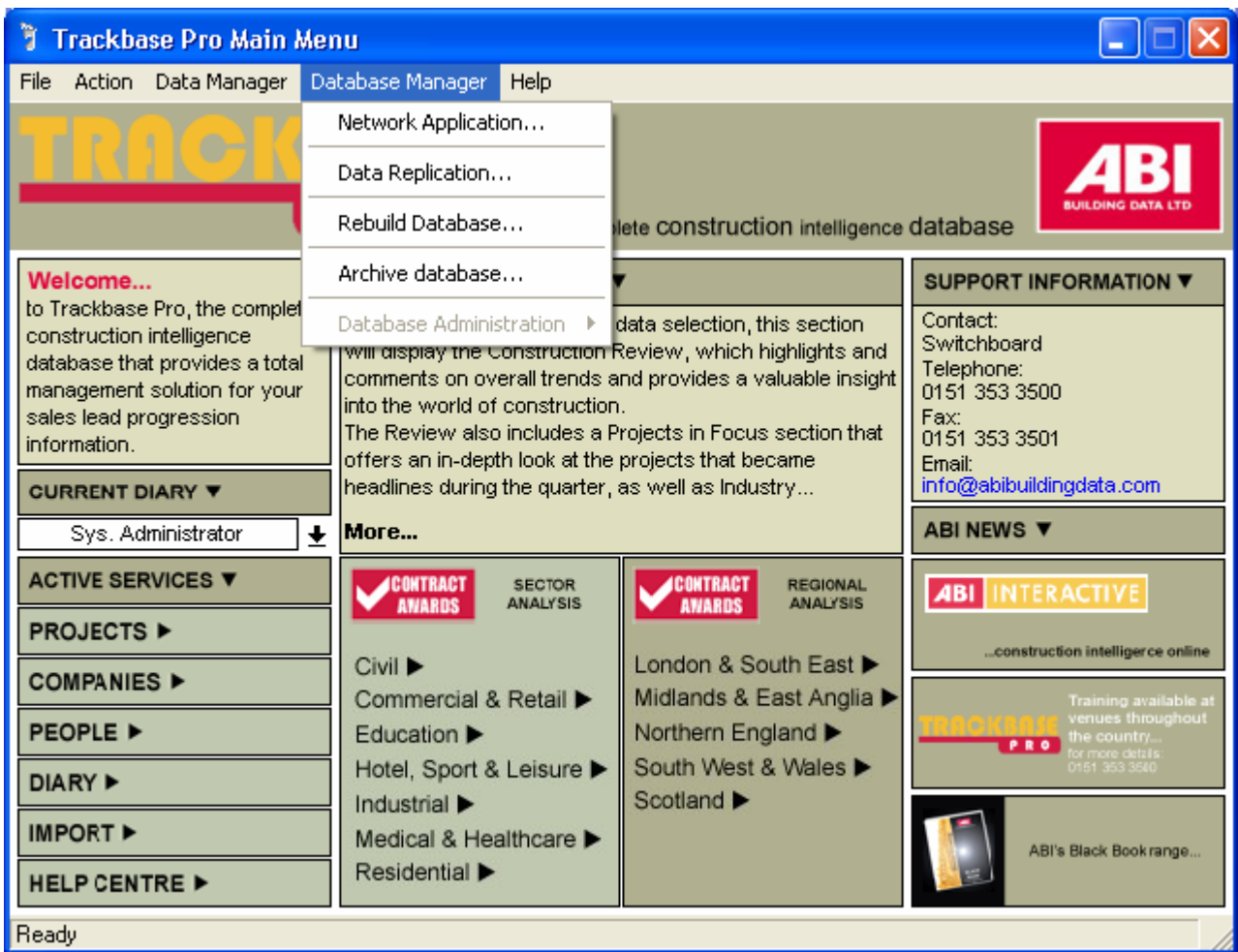
Click “Yes” to confirm you wish to Archive or backup your database



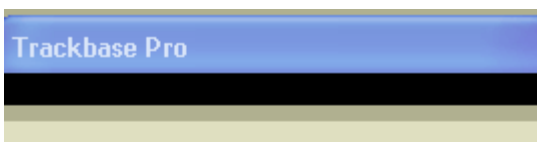
Here you need to choose the most suitable folder or directory where the backup of your database should be saved  
Highlight your choice and click "OK"

When this is completed you will return back to your main screen

To complete the process Click on "Data Manager" again and choose "Rebuild"



When ready click “Ok”

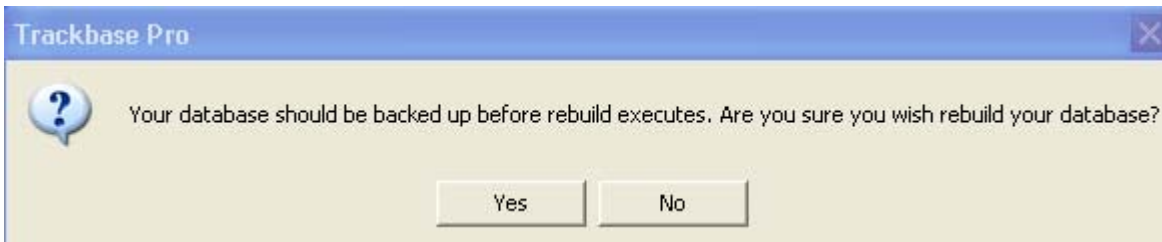


**Rebuild Database**

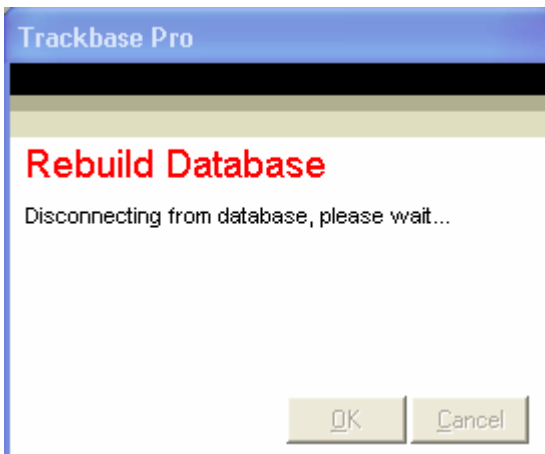
Ready...



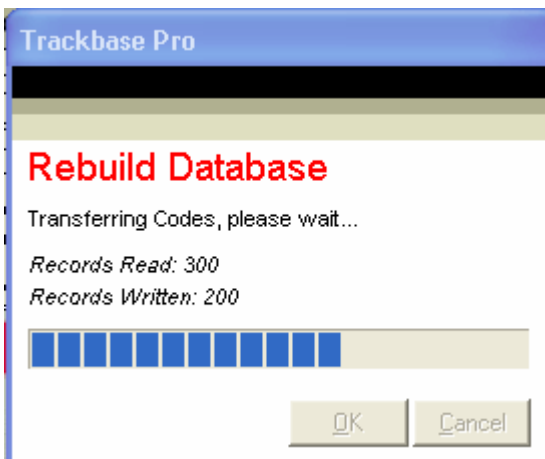
You will now get a message reminding you to “Archive” your database before “Rebuilding”. As this has been completed, Click “Yes” when ready.



Your system will start rebuilding:



Your screen will automatically start transferring codes without clicking ok



Trackbase Pro is now ready for use.