

# Installing Trackbase Pro

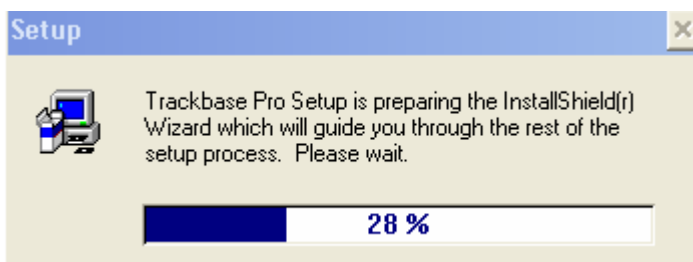
The Trackbase Pro installation file can be obtained by two methods.

1. Download the file from [www.abibuildingdata.com/trackbase](http://www.abibuildingdata.com/trackbase) and save it to your desktop or local disk C. The download file is large, so this is only recommended if you have a broadband connection.
2. Request the file be sent to you on a CD-ROM from ABI Customer Support on 0151 353 3500.

If you have downloaded the file from our website, save it to your computer and then, once the download has completed, locate the file 'Setup.exe', and double-click on it to start the install process.

If you have received a CD-ROM, place the disk into your CD drive. It should automatically start the install process. If the CD does not auto-play, go to 'Start', 'Run' and then click on the 'browse' button. Select your CD drive from the drop down box and then double click on the file 'Setup.exe' that you see in the main box. This will start the install process.

Close all other open programs and then click on 'Yes' to continue.



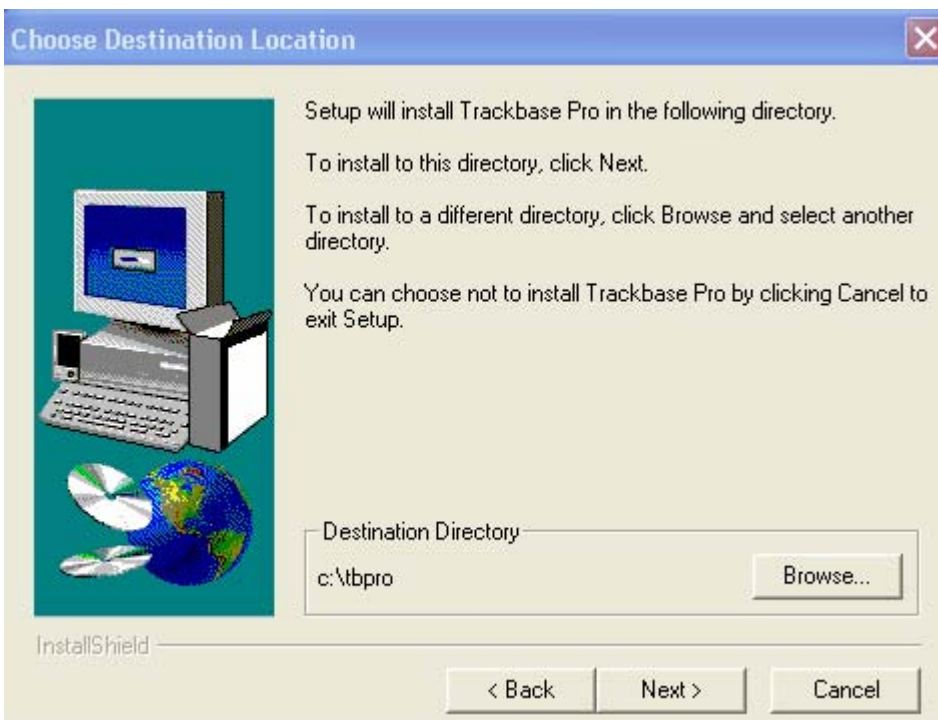
The Trackbase Pro installation will begin.

If you have closed all open programs and are ready to install Trackbase Pro onto your computer click on the 'Next' button to continue.



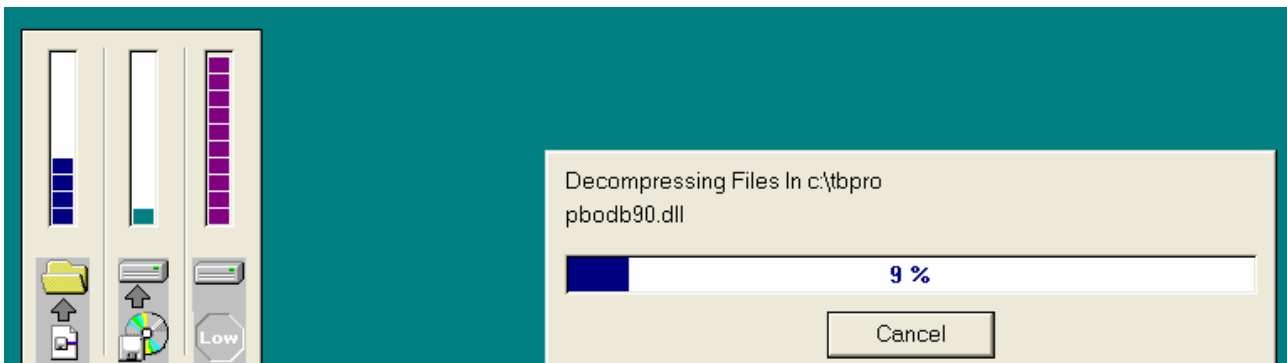
The next screen will tell you the location where Trackbase Pro will be installed. If you need to change this location click on the 'Browse' button and you can select another location. However, we do recommend leaving Trackbase Pro to install to its default locations if possible.

Click 'Next' to continue the installation.

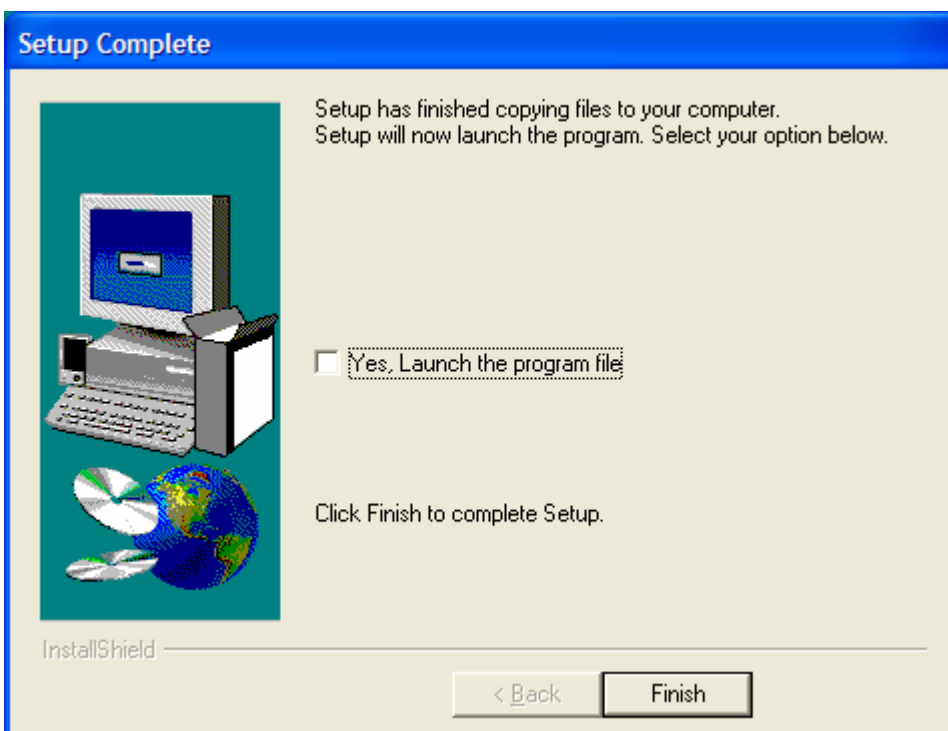


The Trackbase Pro setup will now be confirmed, check that the details are correct and then click on 'Next' to continue.

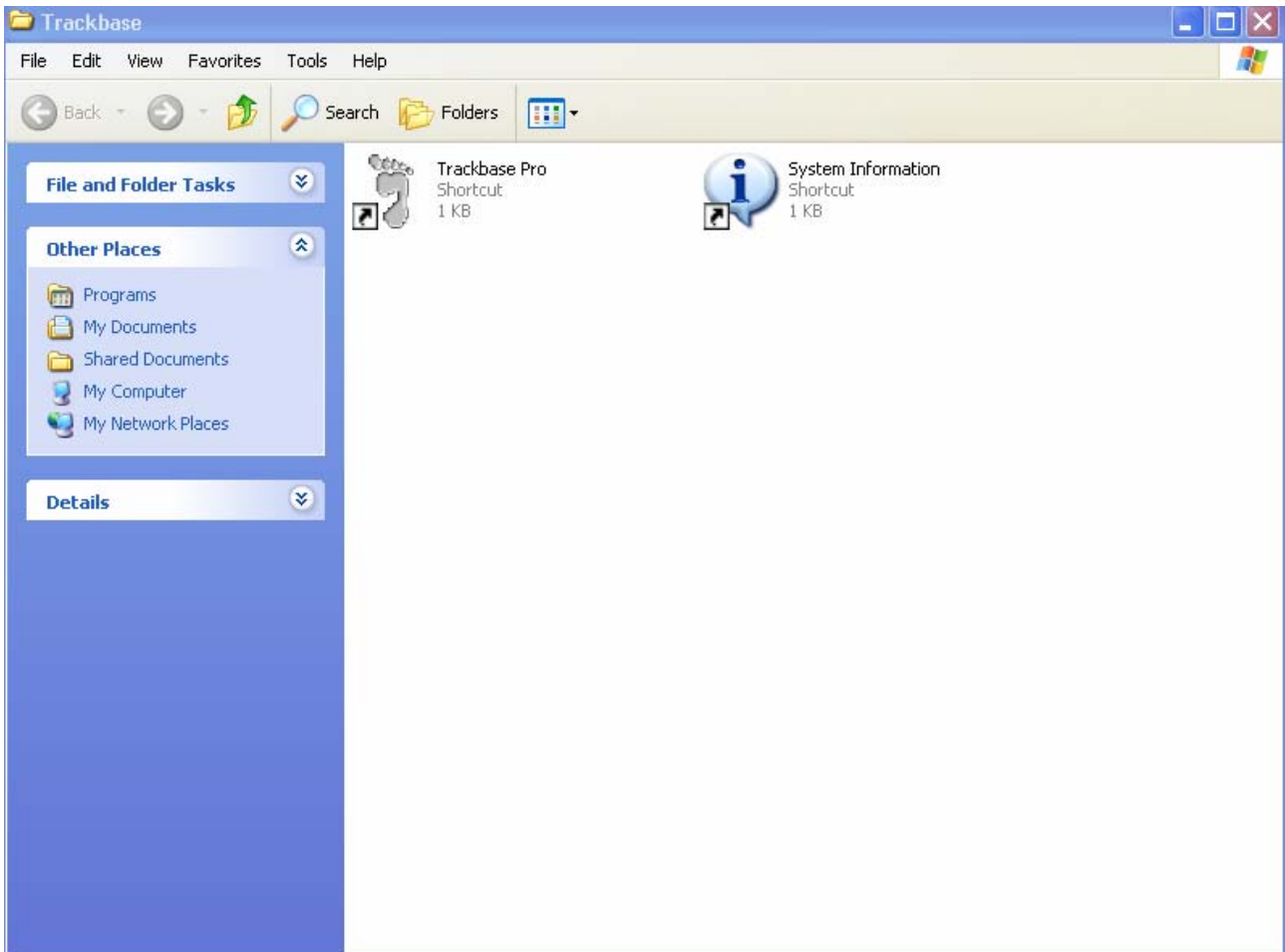
Trackbase Pro will now install on your computer.



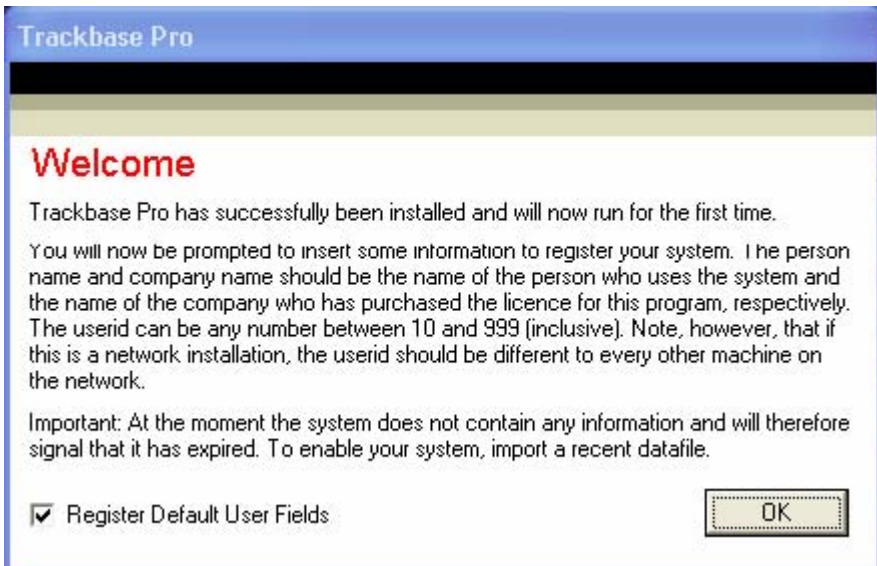
Once the installation has completed you can choose to tick the box next to 'Yes, Launch the program file' and Trackbase Pro will open when you click on the 'Finish' button.



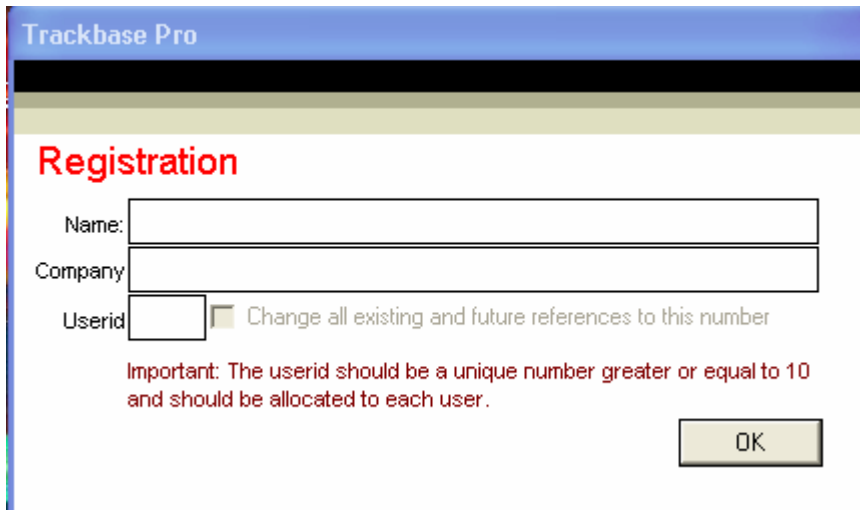
Close the following screen



When Trackbase Pro first opens you will see the window below. Please click OK to continue.



The next window you will see is the Registration window; just enter your Name, Company name and a Userid number between 10 and 99. Click on the OK button to continue.



Trackbase Pro

## Registration

Name:

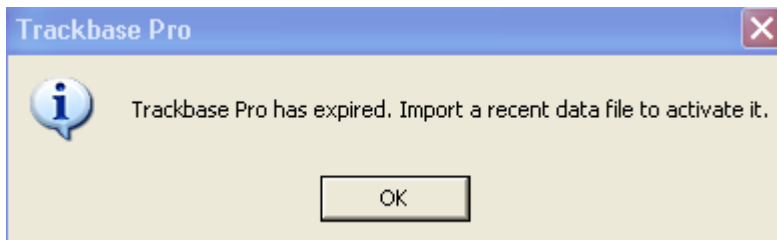
Company:

Userid:   Change all existing and future references to this number

Important: The userid should be a unique number greater or equal to 10 and should be allocated to each user.

OK

You will see a message box indicating that Trackbase Pro has expired.




Click on OK to continue and the main window of Trackbase Pro will then appear.

Trackbase Pro Main Menu

File Action Data Manager Database Manager Help

# TRACKBASE PRO

The complete construction intelligence database



**Welcome...**

to Trackbase Pro, the complete construction intelligence database that provides a total management solution for your sales lead progression information.

**CURRENT DIARY ▼**

Sys. Administrator ↓

**ACTIVE SERVICES ▼**

PROJECTS ▶

COMPANIES ▶

PEOPLE ▶

DIARY ▶

IMPORT ▶

HELP CENTRE ▶

**CONSTRUCTION REVIEW ▼**

Upon downloading your first data selection, this section will display the Construction Review, which highlights and comments on overall trends and provides a valuable insight into the world of construction. The Review also includes a Projects in Focus section that offers an in-depth look at the projects that became headlines during the quarter, as well as Industry...

**More...**

CONTRACT AWARDS	SECTOR ANALYSIS	CONTRACT AWARDS	REGIONAL ANALYSIS
	Civil ▶		London & South East ▶
	Commercial & Retail ▶		Midlands & East Anglia ▶
	Education ▶		Northern England ▶
	Hotel, Sport & Leisure ▶		South West & Wales ▶
	Industrial ▶		Scotland ▶
	Medical & Healthcare ▶		
	Residential ▶		

**SUPPORT INFORMATION ▼**


Contact:  
Switchboard  
Telephone: 0151 353 3500  
Fax: 0151 353 3501  
Email: [info@abibuildingdata.com](mailto:info@abibuildingdata.com)

**ABI NEWS ▼**

**ABI INTERACTIVE**

...construction intelligence online

Training available at venues throughout the country... for more details 0151 353 3500

 ABI's Black Book range...

<http://www.abibuildingdata.com>